

# Glucose (Serum) Microplate Assay Kit

## Basic information:

Catalog No.: UAK1094

Size: 100 Assays

*For research use only. Not for diagnostic or therapeutic procedures.*

## I. INTRODUCTION

Glucose ( $C_6H_{12}O_6$ ) is a key diagnostic parameter for many metabolic disorders. Increased glucose levels have been associated with diabetes mellitus, hyperactivity of thyroid, pituitary and adrenal glands. Decreased levels are found in insulin secreting tumors, myxedema, hypopituitarism and hypoadrenalism. The assay is initiated with the enzymatic catalysis of glucose by glucose oxidase. The enzyme catalysed reaction products  $H_2O_2$  react with the substrate, and can be measured at a colorimetric readout at 505 nm.

## II. KIT COMPONENTS

Component	Volume	Storage
96-Well Microplate	1 plate	
Enzyme	Powder x 1	-20 °C
Enzyme Diluent	10 ml x 1	4 °C
Dye Reagent	Powder x 1	4 °C, keep in dark
Standard (10 mmol/L)	1 ml x 1	4 °C
Plate Adhesive Strips	3 Strips	
Technical Manual	1 Manual	

### Note:

**Enzyme:** add 10 ml Enzyme Diluent to dissolve before use.

**Dye Reagent:** add 10 ml distilled water to dissolve before use.

## III. MATERIALS REQUIRED BUT NOT PROVIDED

1. Microplate reader to read absorbance at 505 nm
2. Distilled water
3. Pipettor
4. Pipette tips
5. Mortar
6. Ice
7. Centrifuge
8. Timer

#### IV. SAMPLE PREPARATION

1. For serum or plasma samples

Detect directly.

#### V. ASSAY PROCEDURE

Add following reagents in the microplate:

Reagent	Sample	Standard	Blank
Sample	20 µl	--	--
Standard	--	20 µl	--
Distilled water	--	--	20 µl
Enzyme	90 µl	90 µl	90 µl
Dye Reagent	90 µl	90 µl	90 µl
Mix, put it in the oven, 37 °C for 15 minutes, record absorbance measured at 505 nm.			

#### VI. CALCULATION

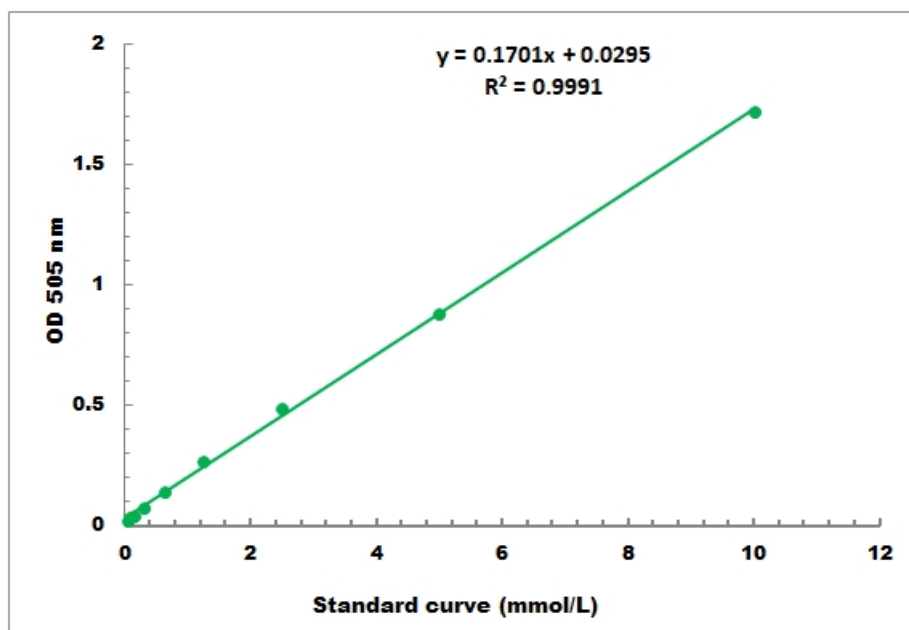
1. According to the volume of serum or plasma

$$\begin{aligned}\text{Glucose (mmol/L)} &= C_{\text{Standard}} \times (\text{OD}_{\text{Sample}} - \text{OD}_{\text{Blank}}) / (\text{OD}_{\text{Standard}} - \text{OD}_{\text{Blank}}) \\ &= 10 \times (\text{OD}_{\text{Sample}} - \text{OD}_{\text{Blank}}) / (\text{OD}_{\text{Standard}} - \text{OD}_{\text{Blank}})\end{aligned}$$

C<sub>Standard</sub>: the standard concentration, 10 mmol/L.

## VII. TYPICAL DATA

The standard curve is for demonstration only. A standard curve must be run with each assay.



Detection Range: 0.1 mmol/L - 10 mmol/L