

His-Tag Monoclonal Antibody[1C5]

Basic information:

Catalog No.:	MM1001	Source:	Mouse
Size:	50ul/100ul	Clonality:	Monoclonal (1C5)
Concentration:	3mg/ml	Isotype:	IgG1
Purification:	Protein G affinity chromatography		

Useful Information:

Applications:	WB: 1:2000-1:20000
Reactivity:	ALL
Specificity:	Recognize 6*His Tag in fusion proteins
Immunogen:	A synthetic peptide HHHHHH conjugated to KLH
Description:	The H-H-H-H-H-H motif is used as a tag on many recombinant proteins to facilitate purification.
Uniprot:	N/A
BiowMW:	N/A
Buffer:	PBS, 50% glycerol, 1mg/ml BSA, 1% Proclin300
Storage:	Store at 4°C short term and -20°C long term. Avoid freeze-thaw cycles.
Note:	For research use only, not for use in diagnostic procedure.

Data:

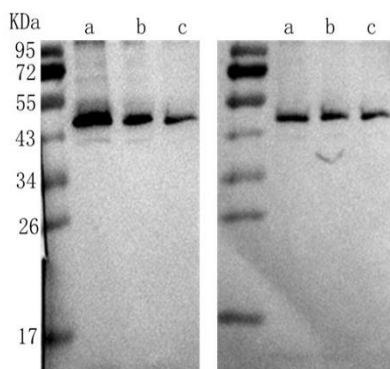


Figure 1

Figure 2

His-Tag Monoclonal Antibody at 1:2000 (Figure 1) and 1:10000 (Figure 2) dilution
Line a:6x His-tagged fusion protein at 100ng
Line b:6x His-tagged fusion protein at 10ng
Line c:6x His-tagged fusion protein at 1ng