

HA-Tag Monoclonal Antibody[7D2]

Basic information:

Catalog No.:	MM1002	Source:	Mouse
Size:	50ul/100ul	Clonality:	Monoclonal (7D2)
Concentration:	0.53mg/ml	Isotype:	IgG1
Purification:	Protein G affinity chromatography		

Useful Information:

Applications:	WB: 1:2000-1:20000
Reactivity:	ALL
Specificity:	Recognize HA Tag in fusion proteins
Immunogen:	A synthetic peptide YPYDVDPYA conjugated to KLH
Description:	Human influenza hemagglutinin (HA) is a surface glycoprotein required for the infectivity of the human virus.
Uniprot:	N/A
BiowMW:	N/A
Buffer:	PBS, 50% glycerol, 1mg/ml BSA, 1% Procolin300
Storage:	Store at 4°C short term and -20°C long term. Avoid freeze-thaw cycles.
Note:	For research use only, not for use in diagnostic procedure.

Data:

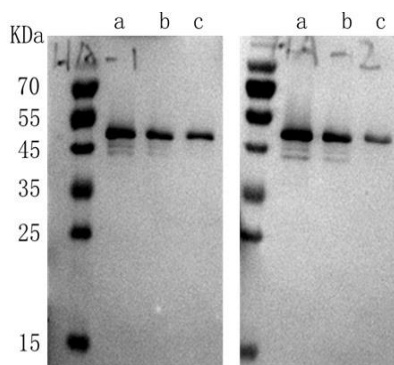


Figure 1

Figure 2

HA-Tag Monoclonal Antibody at 1:2000 (Figure 1)

and 1:10000 (Figure 2) dilution

Line a: HA-tagged fusion protein at 100ng

Line b: HA-tagged fusion protein at 10ng

Line c: HA-tagged fusion protein at 1ng