

## mCherry Polyclonal Antibody

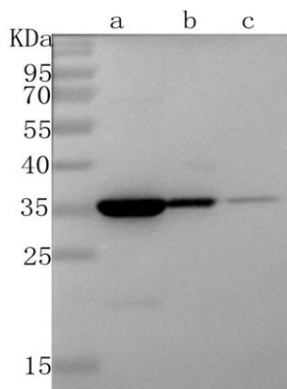
### Basic information:

<b>Catalog No.:</b>	PR2001	<b>Source:</b>	Rabbit
<b>Size:</b>	50ul/100ul	<b>Clonality:</b>	Polyclonal
<b>Concentration:</b>	1mg/ml	<b>Isotype:</b>	IgG
<b>Purification:</b>	Antigen affinity purification		

### Useful Information:

<b>Applications:</b>	WB: 1:2000-1:20000
<b>Reactivity:</b>	ALL
<b>Specificity:</b>	Recognize mCherry fluorescent protein
<b>Immunogen:</b>	Recombinant mCherry fluorescent protein
<b>Description:</b>	mCherry is the second generation monomeric red fluorescent protein that have improved brightness and photostability.
<b>Uniprot:</b>	X5DSL3
<b>BiowMW:</b>	~ 28 kDa
<b>Buffer:</b>	PBS, 50% glycerol, 1mg/ml BSA, 1% Procolin300
<b>Storage:</b>	Store at 4°C short term and -20°C long term. Avoid freeze-thaw cycles.
<b>Note:</b>	For research use only, not for use in diagnostic procedure.

### Data:



mCherry Polyclonal Antibody at 1:10000 dilution  
Line a: Recombinant mCherry protein at 100ng  
Line b: Recombinant mCherry protein at 10ng  
Line c: Recombinant mCherry protein at 1ng