

Strep-Tag Polyclonal Antibody

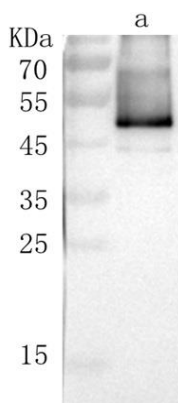
Basic information:

Catalog No.:	PR2012	Source:	Rabbit
Size:	50ul/100ul	Clonality:	Polyclonal
Concentration:	1.1mg/ml	Isotype:	IgG
Purification:	Antigen affinity purification		

Useful Information:

Applications:	WB: 1:2000-1:10000
Reactivity:	ALL
Specificity:	Recognize Strep Tag in fusion proteins
Immunogen:	A synthetic peptide GASWSHPQFEKG conjugated to KLH
Description:	The original Strep-tag (AWRHPQFGG) was a nine amino acid peptide with high specificity and affinity towards streptavidin.
Uniprot:	N/A
BiowMW:	N/A
Buffer:	PBS, 50% glycerol, 1mg/ml BSA, 1% Procolin300
Storage:	Store at 4°C short term and -20°C long term. Avoid freeze-thaw cycles.
Note:	For research use only, not for use in diagnostic procedure.

Data:



Strep-Tag Polyclonal Antibody at 1:10000 dilution
Line a: Strep-tagged fusion protein at 100ng