

## GST-Tag Monoclonal Antibody

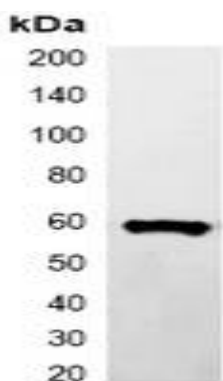
### Basic information:

<b>Catalog No.:</b>	UMA00015	<b>Source:</b>	Mouse
<b>Size:</b>	50ul/100ul	<b>Clonality:</b>	Monoclonal
<b>Concentration:</b>	1mg/ml	<b>Isotype:</b>	IgG
<b>Purification:</b>	The antibody was purified by immunogen affinity chromatography.		

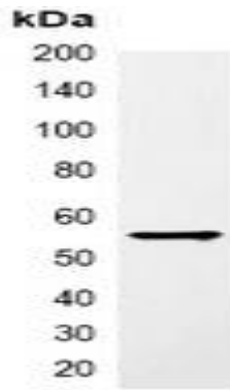
### Useful Information:

<b>Applications:</b>	WB: 1:2000 - 1:5000 IP: 1:100-1:200
<b>Reactivity:</b>	N/A
<b>Specificity:</b>	Recognizes C-terminal, internal, and N-terminal GST-tag fusion proteins.
<b>Immunogen:</b>	KLH-conjugated synthetic peptide encompassing a sequence of GST-tag. The exact sequence is proprietary.
<b>Description:</b>	Mouse monoclonal antibody to GST-tag
<b>Uniprot:</b>	
<b>BiowMW:</b>	Refer to Figures
<b>Buffer:</b>	Liquid in 0.42% Potassium phosphate, 0.87% Sodium chloride, pH 7.3, 30% glycerol, and 0.01% sodium azide.
<b>Storage:</b>	Store at 4°C short term and -20°C long term. Avoid freeze-thaw cycles.
<b>Note:</b>	For research use only, not for use in diagnostic procedure.

### Data:



Western blot analysis of over-expressed GST-tagged protein in 293T cell lysate.



Immunoprecipitation of GST-tagged protein from HEK293T cells transfected with vector overexpressing GST tag, using Anti-GST-tag Antibody.