

His-Tag Monoclonal Antibody

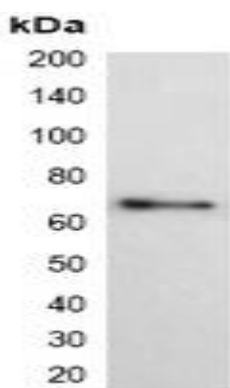
Basic information:

Catalog No.:	UMA00017	Source:	Mouse
Size:	50ul/100ul	Clonality:	Monoclonal
Concentration:	1mg/ml	Isotype:	IgG
Purification:	The antibody was purified by immunogen affinity chromatography.		

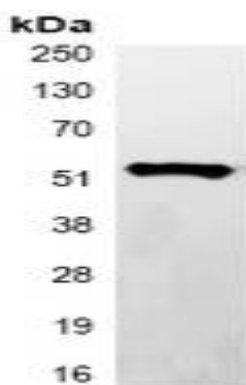
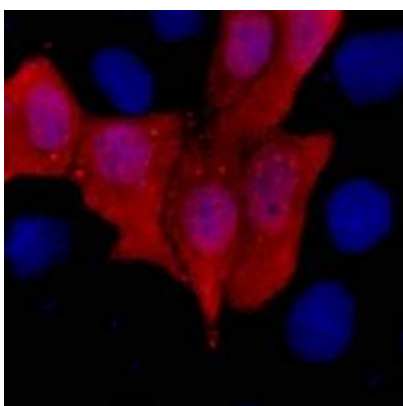
Useful Information:

Applications:	WB: 1:1000 - 1:3000 IF/IC: 1:100-1:200 IP: 1:50-1:200
Reactivity:	N/A
Specificity:	Recognizes C-terminal, internal, and N-terminal His-tag fusion proteins.
Immunogen:	KLH-conjugated synthetic peptide encompassing a sequence of His-tag. The exact sequence is proprietary.
Description:	Mouse monoclonal antibody to His-tag
Uniprot:	
BiowMW:	Refer to Figures
Buffer:	Liquid in 0.42% Potassium phosphate, 0.87% Sodium chloride, pH 7.3, 30% glycerol, and 0.01% sodium azide.
Storage:	Store at 4°C short term and -20°C long term. Avoid freeze-thaw cycles.
Note:	For research use only, not for use in diagnostic procedure.

Data:



Western blot analysis of over-expressed His-tagged protein in 293T cell lysate.



Immunofluorescent analysis of His-tag staining in 293T cells transfected with a His-tag protein. Formalin-fixed cells were permeabilized with 0.1% Triton X-100 in TBS for 5-10 minutes and blocked with 3% BSA-PBS for 30 minutes at room temperature. Cells were probed with the primary antibody in 3% BSA-PBS and incubated overnight at 4 °C in a humidified chamber. Cells were washed with PBST and incubated with a DyLight 594-conjugated secondary antibody (red) in PBS at room temperature in the dark. DAPI was used to stain the cell nuclei (blue).

Immunoprecipitation of His-tagged protein from HEK293T cells transfected with vector overexpressing His tag, using Anti-His-tag Antibody.