

# Beta-tubulin Monoclonal Antibody

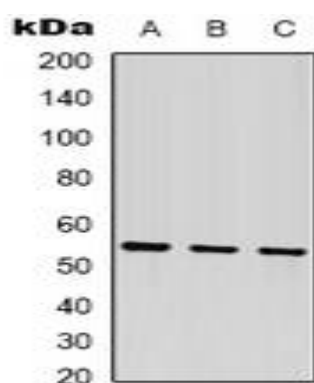
## Basic information:

<b>Catalog No.:</b>	UMA00065	<b>Source:</b>	Mouse
<b>Size:</b>	50ul/100ul	<b>Clonality:</b>	Monoclonal
<b>Concentration:</b>	1mg/ml	<b>Isotype:</b>	IgG
<b>Purification:</b>	The antibody was purified by immunogen affinity chromatography.		

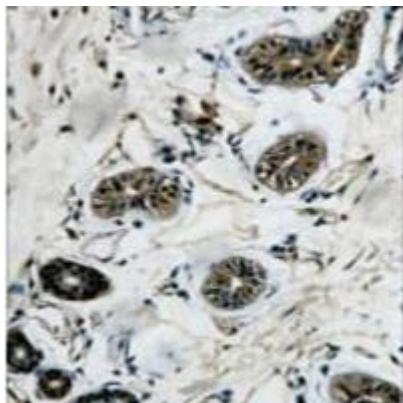
## Useful Information:

<b>Applications:</b>	WB: 1:1000 - 1:3000 IHC: 1:50-1:100 IP: 1:50-1:100
<b>Reactivity:</b>	Human, Mouse, Rat, Monkey, Dog, Chicken, Rabbit
<b>Specificity:</b>	Recognizes endogenous levels of Beta-tubulin protein.
<b>Immunogen:</b>	KLH-conjugated synthetic peptide encompassing a sequence of human Beta-tubulin. The exact sequence is proprietary.
<b>Description:</b>	Mouse monoclonal antibody to Beta-tubulin
<b>Uniprot:</b>	Q13509(Human), Q9ERD7(Mouse), Q4QRB4(Rat)
<b>BiowMW:</b>	Refer to Figures
<b>Buffer:</b>	Liquid in 0.42% Potassium phosphate, 0.87% Sodium chloride, pH 7.3, 0.2% BSA, 30% glycerol, and 0.01% sodium azide.
<b>Storage:</b>	Store at 4°C short term and -20°C long term. Avoid freeze-thaw cycles.
<b>Note:</b>	For research use only, not for use in diagnostic procedure.

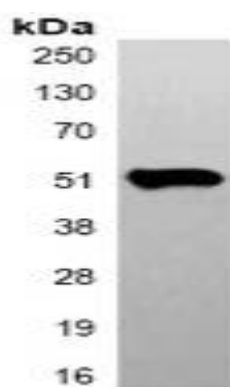
## Data:



Western blot analysis of Beta-tubulin expression in HeLa (A), mouse kidney (B), rat heart (C) whole cell lysates.



Immunohistochemical analysis of Beta-tubulin staining in human colon formalin fixed paraffin embedded tissue section. The section was pre-treated using heat mediated antigen retrieval with sodium citrate buffer (pH 6.0). The section was then incubated with the antibody at room temperature and detected using an HRP conjugated compact polymer system. DAB was used as the chromogen. The section was then counterstained with haematoxylin and mounted with DPX.



Immunoprecipitation of Beta-tubulin from 0.5mg mouse brain whole cell extract lysate, using Anti-Beta-tubulin Antibody.