

## GAPDH Antibody-HRP labeled

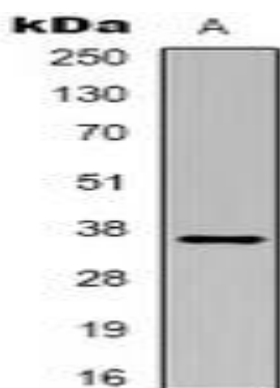
### Basic information:

<b>Catalog No.:</b>	UMA00102	<b>Source:</b>	Mouse
<b>Size:</b>	50ul/100ul	<b>Clonality:</b>	Monoclonal
<b>Concentration:</b>	1mg/ml	<b>Isotype:</b>	
<b>Purification:</b>	The antibody was purified by immunogen affinity chromatography.		

### Useful Information:

<b>Applications:</b>	WB: 1:2000 - 1:5000
<b>Reactivity:</b>	Human, Mouse, Rat, Monkey, Dog, Chicken, Rabbit, Pig, Sheep
<b>Specificity:</b>	Recognizes endogenous levels of GAPDH protein.
<b>Immunogen:</b>	KLH-conjugated synthetic peptide encompassing a sequence of human GAPDH. The exact sequence is proprietary.
<b>Description:</b>	Mouse monoclonal antibody to GAPDH
<b>Uniprot:</b>	P04406(Human), P16858(Mouse), P04797(Rat)
<b>BiowMW:</b>	Refer to Figures
<b>Buffer:</b>	Liquid in 0.42% Potassium phosphate, 0.87% Sodium chloride, pH 7.3, 30% glycerol, and 0.01% sodium azide.
<b>Storage:</b>	Store at 4°C short term and -20°C long term. Avoid freeze-thaw cycles.
<b>Note:</b>	For research use only, not for use in diagnostic procedure.

### Data:



Western blot analysis of GAPDH-HRP labeled expression in HeLa (A) whole cell lysates.