

OCT1 Antibody

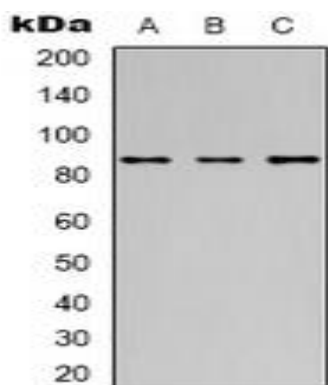
Basic information:

Catalog No.:	UMA00138	Source:	Mouse
Size:	50ul/100ul	Clonality:	Monoclonal
Concentration:	1mg/ml	Isotype:	IgG
Purification:	Affinity chromatography		

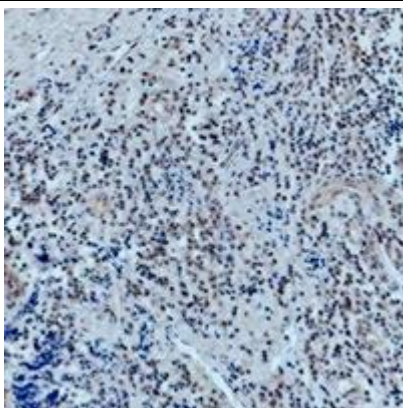
Useful Information:

Applications:	WB (1:500 - 1:2000), IHC (1:50 - 1:200)
Reactivity:	Human
Specificity:	Recognizes endogenous levels of OCT1 protein.
Immunogen:	KLH-conjugated synthetic peptide encompassing a sequence of human OCT1. The exact sequence is proprietary.
Description:	Mouse monoclonal antibody to OCT1
Uniprot:	P14859; P09086
BiowMW:	Refer to Figures
Buffer:	Liquid in 0.42% Potassium phosphate, 0.87% Sodium chloride, pH 7.3, 30% glycerol, and 0.01% Thimerosal.
Storage:	Shipped at 4°C. Upon delivery aliquot and store at -20°C for one year. Avoid freeze/thaw cycles.
Note:	For research use only, not for use in diagnostic procedure.

Data:



Western blot analysis of OCT1 expression in HeLa (A), Jurkat (B), HepG2 (C) whole cell lysates. (Predicted band size: 76; 51 kD; Observed band size: 89 kD)



Immunohistochemical analysis of 42278 staining in human tonsil formalin fixed paraffin embedded tissue section. The section was pre-treated using heat mediated antigen retrieval with sodium citrate buffer (pH 6.0). The section was then incubated with the antibody at room temperature and detected using an HRP conjugated compact polymer system. DAB was used as the chromogen. The section was then counterstained with haematoxylin and mounted with DPX.