

PARP1 Antibody

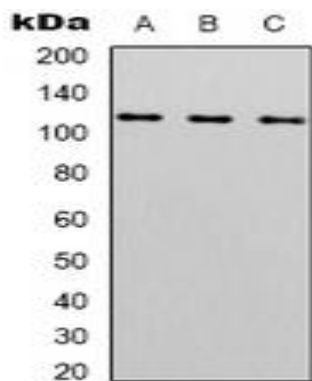
Basic information:

Catalog No.:	UMA00141	Source:	Mouse
Size:	50ul/100ul	Clonality:	Monoclonal
Concentration:	1mg/ml	Isotype:	IgG
Purification:	Affinity chromatography		

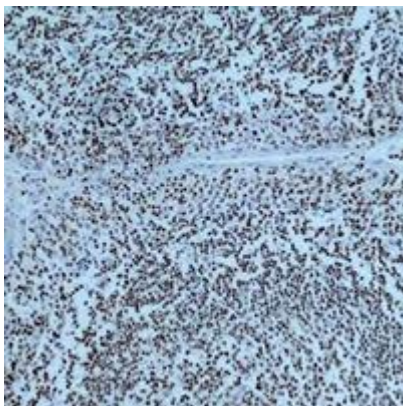
Useful Information:

Applications:	WB (1:1000 - 1:3000), IHC (1:200 - 1:500)
Reactivity:	Human
Specificity:	Recognizes endogenous levels of PARP1 protein.
Immunogen:	KLH-conjugated synthetic peptide encompassing a sequence of human PARP1. The exact sequence is proprietary.
Description:	Mouse monoclonal antibody to PARP1
Uniprot:	P09874
BiowMW:	Refer to Figures
Buffer:	Liquid in 0.42% Potassium phosphate, 0.87% Sodium chloride, pH 7.3, 30% glycerol, and 0.01% Thimerosal.
Storage:	Shipped at 4°C. Upon delivery aliquot and store at -20°C for one year. Avoid freeze/thaw cycles.
Note:	For research use only, not for use in diagnostic procedure.

Data:



Western blot analysis of PARP1 expression in HeLa (A), 293T (B), Jurkat (C) whole cell lysates. (Predicted band size: 113 kD; Observed band size: 116 kD)



Immunohistochemical analysis of PARP1 staining in human tonsil formalin fixed paraffin embedded tissue section. The section was pre-treated using heat mediated antigen retrieval with sodium citrate buffer (pH 6.0). The section was then incubated with the antibody at room temperature and detected using an HRP conjugated compact polymer system. DAB was used as the chromogen. The section was then counterstained with haematoxylin and mounted with DPX.