

## XRCC4 Antibody

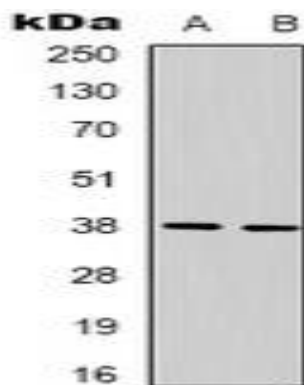
### Basic information:

<b>Catalog No.:</b>	UMA00158	<b>Source:</b>	Mouse
<b>Size:</b>	50ul/100ul	<b>Clonality:</b>	Monoclonal
<b>Concentration:</b>	1mg/ml	<b>Isotype:</b>	IgG
<b>Purification:</b>	Affinity chromatography		

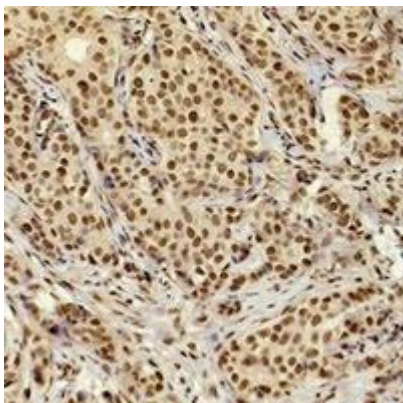
### Useful Information:

<b>Applications:</b>	WB (1:1000 - 1:2000), IHC (1:200 - 1:500), IP (1:100 - 1:200)
<b>Reactivity:</b>	Human
<b>Specificity:</b>	Recognizes endogenous levels of XRCC4 protein.
<b>Immunogen:</b>	KLH-conjugated synthetic peptide encompassing a sequence of human XRCC4. The exact sequence is proprietary.
<b>Description:</b>	Mouse monoclonal antibody to XRCC4
<b>Uniprot:</b>	Q13426
<b>BiowMW:</b>	Refer to Figures
<b>Buffer:</b>	Liquid in 0.42% Potassium phosphate, 0.87% Sodium chloride, pH 7.3, 30% glycerol, and 0.01% Thimerosal.
<b>Storage:</b>	Shipped at 4°C. Upon delivery aliquot and store at -20°C for one year. Avoid freeze/thaw cycles.
<b>Note:</b>	For research use only, not for use in diagnostic procedure.

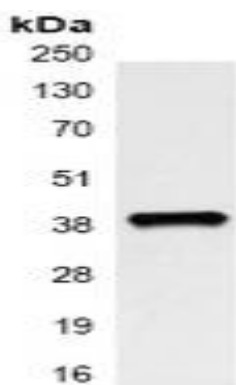
### Data:



Western blot analysis of XRCC4 expression in Hela (A), 293T (B) whole cell lysates. (Predicted band size: 38 kD; Observed band size: 38 kD)



Immunohistochemical analysis of XRCC4 staining in human breast cancer formalin fixed paraffin embedded tissue section. The section was pre-treated using heat mediated antigen retrieval with sodium citrate buffer (pH 6.0). The section was then incubated with the antibody at room temperature and detected using an HRP conjugated compact polymer system. DAB was used as the chromogen. The section was then counter-stained with haematoxylin and mounted with DPX.



Immunoprecipitation of XRCC4 from 0.5mg HeLa whole cell extract lysate, using Anti-XRCC4 Antibody.