

Glycerol Kinase 1 Antibody

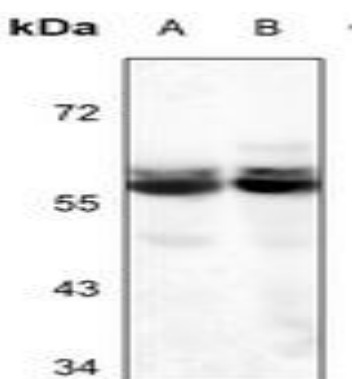
Basic information:

Catalog No.:	UPA00474	Source:	Rabbit
Size:	50ul/100ul	Clonality:	Polyclonal
Concentration:	1mg/ml	Isotype:	IgG
Purification:	The antibody was purified by immunogen affinity chromatography.		

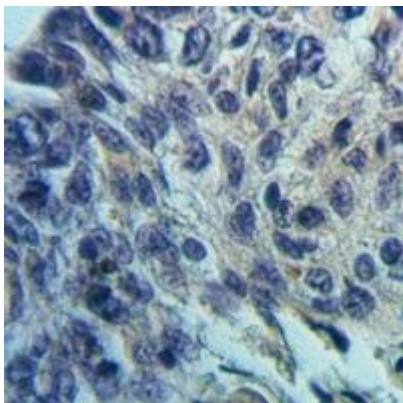
Useful Information:

Applications:	WB (1:500 - 1:1000), IHC (1:50 - 1:100), IF/ICC (1:50 - 1:200)
Reactivity:	Human, Mouse, Rat, Bovine, Dog, Pig
Specificity:	Recognizes endogenous levels of Glycerol Kinase 1 protein.
Immunogen:	KLH-conjugated synthetic peptide encompassing a sequence within the C-term region of human Glycerol Kinase 1. The exact sequence is proprietary.
Description:	Rabbit polyclonal antibody to Glycerol Kinase 1
Uniprot:	P32189
BiowMW:	Refer to Figures
Buffer:	Liquid in 0.42% Potassium phosphate, 0.87% Sodium chloride, pH 7.3, 30% glycerol, and 0.01% Thimerosal.
Storage:	Shipped at 4°C. Upon delivery aliquot and store at -20°C for one year. Avoid freeze/thaw cycles.
Note:	For research use only, not for use in diagnostic procedure.

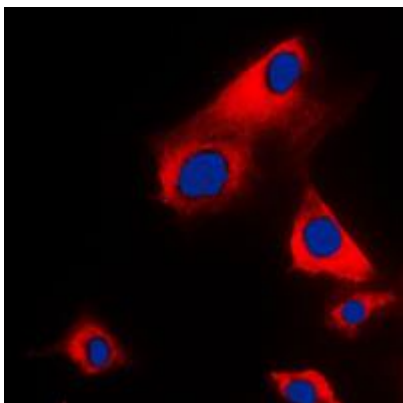
Data:



Western blot analysis of Glycerol Kinase 1 expression in mouse liver (A), rat liver (B) whole cell lysates. (Predicted band size: 61 kD; Observed band size: 57 kD)



Immunohistochemical analysis of Glycerol Kinase 1 staining in human lung cancer formalin fixed paraffin embedded tissue section. The section was pre-treated using heat mediated antigen retrieval with sodium citrate buffer (pH 6.0). The section was then incubated with the antibody at room temperature and detected using an HRP conjugated compact polymer system. DAB was used as the chromogen. The section was then counterstained with haematoxylin and mounted with DPX.



Immunofluorescent analysis of Glycerol Kinase 1 staining in H9C2 cells. Formalin-fixed cells were permeabilized with 0.1% Triton X-100 in TBS for 5-10 minutes and blocked with 3% BSA-PBS for 30 minutes at room temperature. Cells were probed with the primary antibody in 3% BSA-PBS and incubated overnight at 4 °C in a humidified chamber. Cells were washed with PBST and incubated with a DyLight 594-conjugated secondary antibody (red) in PBS at room temperature in the dark. DAPI was used to stain the cell nuclei (blue).