

SUMO2/3 Antibody

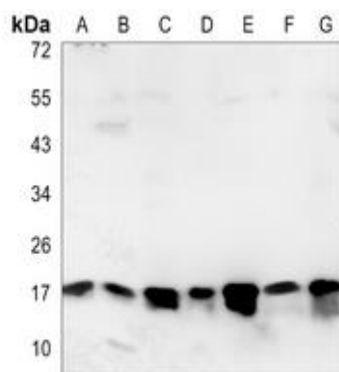
Basic information:

Catalog No.:	UPA01085	Source:	Rabbit
Size:	50ul/100ul	Clonality:	Polyclonal
Concentration:	1mg/ml	Isotype:	IgG
Purification:	The antibody was purified by immunogen affinity chromatography.		

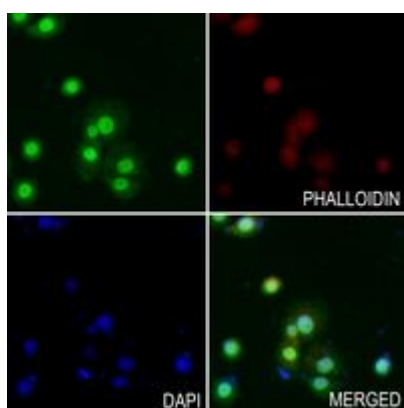
Useful Information:

Applications:	WB (1:500 - 1:1000), IF/ICC (1:50 - 1:200)
Reactivity:	Human, Mouse, Rat, Bovine, Pig, Zebrafish
Specificity:	Recognizes endogenous levels of SUMO2/3 protein.
Immunogen:	KLH-conjugated synthetic peptide encompassing a sequence within the center region of human SUMO2/3. The exact sequence is proprietary.
Description:	Rabbit polyclonal antibody to SUMO2/3
Uniprot:	P61956
BiowMW:	Refer to Figures
Buffer:	Liquid in 0.42% Potassium phosphate, 0.87% Sodium chloride, pH 7.3, 30% glycerol, and 0.01% Thimerosal.
Storage:	Shipped at 4°C. Upon delivery aliquot and store at -20°C for one year. Avoid freeze/thaw cycles.
Note:	For research use only, not for use in diagnostic procedure.

Data:



Western blot analysis of SUMO2/3 expression in HEK293T (A), A549 (B), U2OS (C), mouse brain (D), mouse testis (E), rat brain (F), rat testis (G) whole cell lysates. (Predicted band size: 10; 11 kD; Observed band size: 17 kD)



Immunofluorescent analysis of SUMO2/3 staining in HeLa cells. Formalin-fixed cells were permeabilized with 0.1% Triton X-100 in TBS for 5-10 minutes and blocked with 3% BSA-PBS for 30 minutes at room temperature. Cells were probed with the primary antibody in 3% BSA-PBS and incubated overnight at 4 °C in a humidified chamber. Cells were washed with PBST and incubated with a AF488-conjugated secondary antibody (green) in PBS at room temperature in the dark. Phalloidin - AF594 was used to stain Actin filaments (red). DAPI was used to stain the cell nuclei (blue).