

Tyrosinase Antibody

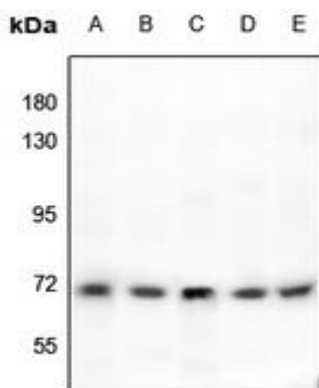
Basic information:

Catalog No.:	UPA01200	Source:	Rabbit
Size:	50ul/100ul	Clonality:	Polyclonal
Concentration:	1mg/ml	Isotype:	IgG
Purification:	The antibody was purified by immunogen affinity chromatography.		

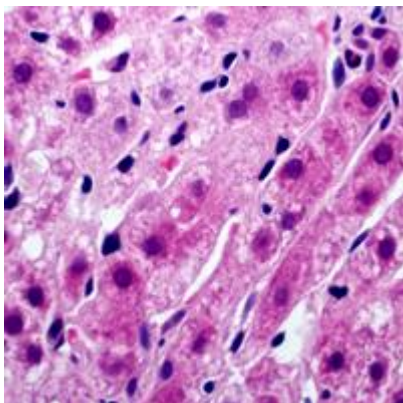
Useful Information:

Applications:	WB (1:500 - 1:1000), IHC (1:100 - 1:200), IF/ICC (1:100 - 1:500)
Reactivity:	Human, Mouse, Rat
Specificity:	Recognizes endogenous levels of Tyrosinase protein.
Immunogen:	KLH-conjugated synthetic peptide encompassing a sequence within the C-term region of human Tyrosinase. The exact sequence is proprietary.
Description:	Rabbit polyclonal antibody to Tyrosinase
Uniprot:	P14679
BiowMW:	Refer to Figures
Buffer:	Liquid in 0.42% Potassium phosphate, 0.87% Sodium chloride, pH 7.3, 30% glycerol, and 0.01% Thimerosal.
Storage:	Shipped at 4°C. Upon delivery aliquot and store at -20°C for one year. Avoid freeze/thaw cycles.
Note:	For research use only, not for use in diagnostic procedure.

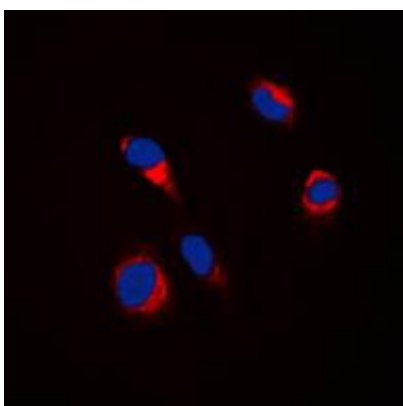
Data:



Western blot analysis of Tyrosinase expression in A375 (A), Podocyte (B), Beas2B (C), PMVEC (D), BV2 (E) whole cell lysates. (Predicted band size: 60 kD; Observed band size: 70 kD)



Immunohistochemical analysis of Tyrosinase staining in human liver formalin fixed paraffin embedded tissue section. The section was pre-treated using heat mediated antigen retrieval with sodium citrate buffer (pH 6.0). The section was then incubated with the antibody at room temperature and detected using an HRP conjugated compact polymer system. AEC was used as the chromogen. The section was then counter-stained with haematoxylin and mounted with DPX.



Immunofluorescent analysis of Tyrosinase staining in HepG2 cells. Formalin-fixed cells were permeabilized with 0.1% Triton X-100 in TBS for 5-10 minutes and blocked with 3% BSA-PBS for 30 minutes at room temperature. Cells were probed with the primary antibody in 3% BSA-PBS and incubated overnight at 4 °C in a humidified chamber. Cells were washed with PBST and incubated with a DyLight 594-conjugated secondary antibody (red) in PBS at room temperature in the dark. DAPI was used to stain the cell nuclei (blue).