

## CLIP2 Antibody

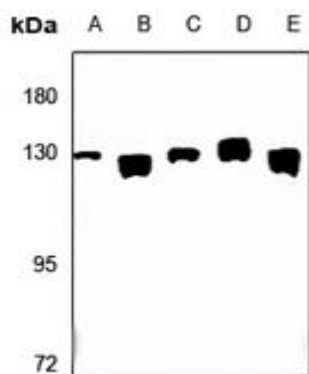
### Basic information:

<b>Catalog No.:</b>	UPA01230	<b>Source:</b>	Rabbit
<b>Size:</b>	50ul/100ul	<b>Clonality:</b>	Polyclonal
<b>Concentration:</b>	1mg/ml	<b>Isotype:</b>	IgG
<b>Purification:</b>	The antibody was purified by immunogen affinity chromatography.		

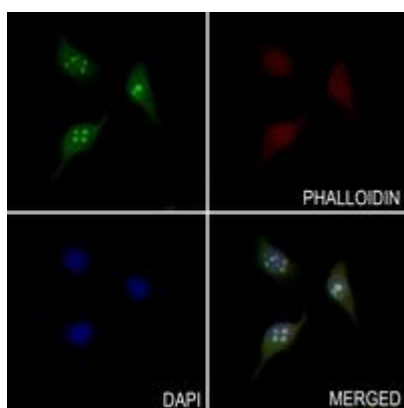
### Useful Information:

<b>Applications:</b>	WB (1:500 - 1:1000), IF/ICC (1:50 - 1:200)
<b>Reactivity:</b>	Human, Mouse, Rat, Monkey
<b>Specificity:</b>	Recognizes endogenous levels of CLIP2 protein.
<b>Immunogen:</b>	KLH-conjugated synthetic peptide encompassing a sequence within the C-term region of human CLIP2. The exact sequence is proprietary.
<b>Description:</b>	Rabbit polyclonal antibody to CLIP2
<b>Uniprot:</b>	Q9UDT6
<b>BiowMW:</b>	Refer to Figures
<b>Buffer:</b>	Liquid in 0.42% Potassium phosphate, 0.87% Sodium chloride, pH 7.3, 30% glycerol, and 0.01% Thimerosal.
<b>Storage:</b>	Shipped at 4°C. Upon delivery aliquot and store at -20°C for one year. Avoid freeze/thaw cycles.
<b>Note:</b>	For research use only, not for use in diagnostic procedure.

### Data:



Western blot analysis of CLIP2 expression in AML12 (A), PC12 (B), A549 (C), LO2 (D), HeLa (E) whole cell lysates. (Predicted band size: 115 kD; Observed band size: 130 kD)



Immunofluorescent analysis of Vimentin staining in CLIP2 cells. Formalin-fixed cells were permeabilized with 0.1% Triton X-100 in TBS for 5-10 minutes and blocked with 3% BSA-PBS for 30 minutes at room temperature. Cells were probed with the primary antibody in 3% BSA-PBS and incubated overnight at 4 °C in a humidified chamber. Cells were washed with PBST and incubated with a AF488-conjugated secondary antibody (green) in PBS at room temperature in the dark. DAPI was used to stain the cell nuclei (blue).