

MOV10L1 Antibody

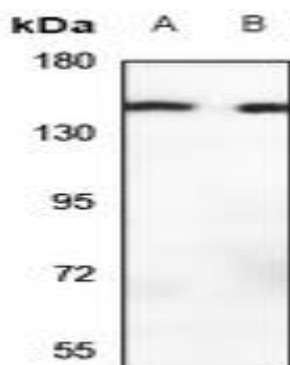
Basic information:

Catalog No.:	UPA02417	Source:	Rabbit
Size:	50ul/100ul	Clonality:	Polyclonal
Concentration:	1mg/ml	Isotype:	IgG
Purification:	The antibody was purified by immunogen affinity chromatography.		

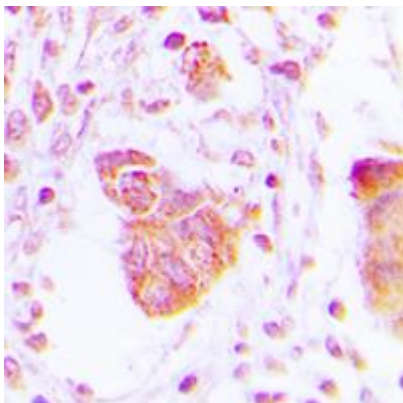
Useful Information:

Applications:	WB (1:500 - 1:1000), IHC (1:100 - 1:200)
Reactivity:	Human, Mouse, Rat
Specificity:	Recognizes endogenous levels of MOV10L1 protein.
Immunogen:	KLH-conjugated synthetic peptide encompassing a sequence within the center region of human MOV10L1. The exact sequence is proprietary.
Description:	Rabbit polyclonal antibody to MOV10L1
Uniprot:	Q9BXT6
BiowMW:	Refer to Figures
Buffer:	Liquid in 0.42% Potassium phosphate, 0.87% Sodium chloride, pH 7.3, 30% glycerol, and 0.01% Thimerosal.
Storage:	Shipped at 4°C. Upon delivery aliquot and store at -20°C for one year. Avoid freeze/thaw cycles.
Note:	For research use only, not for use in diagnostic procedure.

Data:



Western blot analysis of MOV10L1 expression in rat testis (A), mouse testis (B) whole cell lysates. (Predicted band size: 135 kD; Observed band size: 135 kD)



Immunohistochemical analysis of MOV10L1 staining in human lung cancer formalin fixed paraffin embedded tissue section. The section was pre-treated using heat mediated antigen retrieval with sodium citrate buffer (pH 6.0). The section was then incubated with the antibody at room temperature and detected using an HRP conjugated compact polymer system. DAB was used as the chromogen. The section was then counter-stained with haematoxylin and mounted with DPX.