

## CEP110 Antibody

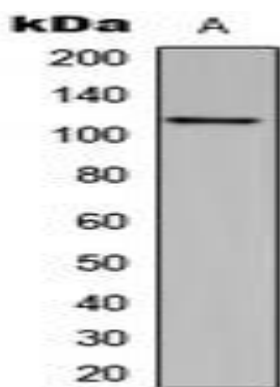
### Basic information:

<b>Catalog No.:</b>	UPA02819	<b>Source:</b>	Rabbit
<b>Size:</b>	50ul/100ul	<b>Clonality:</b>	Polyclonal
<b>Concentration:</b>	1mg/ml	<b>Isotype:</b>	IgG
<b>Purification:</b>	The antibody was purified by immunogen affinity chromatography.		

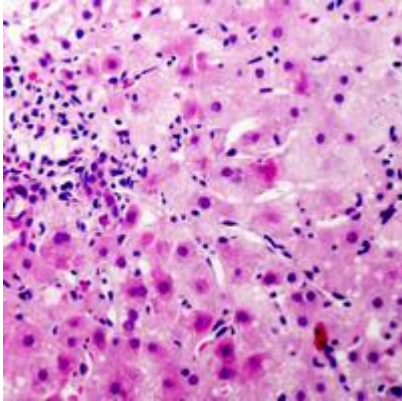
### Useful Information:

<b>Applications:</b>	WB: 1:500 - 1:1000 IHC: 1:100-1:200
<b>Reactivity:</b>	Human, Monkey
<b>Specificity:</b>	Recognizes endogenous levels of CEP110 protein.
<b>Immunogen:</b>	KLH-conjugated synthetic peptide encompassing a sequence within the C-term region of human CEP110. The exact sequence is proprietary.
<b>Description:</b>	Rabbit polyclonal antibody to CEP110
<b>Uniprot:</b>	O43303(Human), Q7TSH4(Mouse)
<b>BiowMW:</b>	Refer to Figures
<b>Buffer:</b>	Liquid in 0.42% Potassium phosphate, 0.87% Sodium chloride, pH 7.3, 30% glycerol, and 0.01% sodium azide.
<b>Storage:</b>	Store at 4°C short term and -20°C long term. Avoid freeze-thaw cycles.
<b>Note:</b>	For research use only, not for use in diagnostic procedure.

### Data:



Western blot analysis of CEP110 expression in MCF7 (A) whole cell lysates.



Immunohistochemical analysis of CEP110 staining in human liver cancer formalin fixed paraffin embedded tissue section. The section was pre-treated using heat mediated antigen retrieval with sodium citrate buffer (pH 6.0). The section was then incubated with the antibody at room temperature and detected using an HRP conjugated compact polymer system. DAB was used as the chromogen. The section was then counter-stained with haematoxylin and mounted with DPX.