

## CD68 Antibody

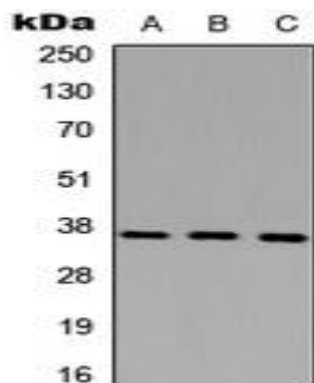
### Basic information:

<b>Catalog No.:</b>	UPA02827	<b>Source:</b>	Rabbit
<b>Size:</b>	50ul/100ul	<b>Clonality:</b>	Polyclonal
<b>Concentration:</b>	1mg/ml	<b>Isotype:</b>	IgG
<b>Purification:</b>	The antibody was purified by immunogen affinity chromatography.		

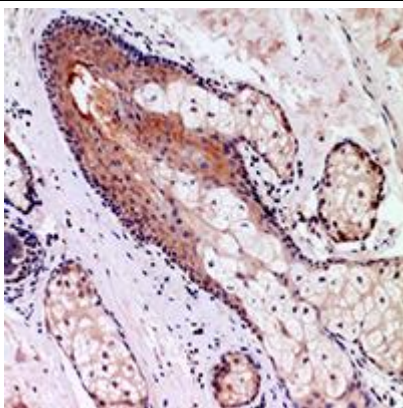
### Useful Information:

<b>Applications:</b>	WB: 1:500 - 1:1000 IHC: 1:100-1:200
<b>Reactivity:</b>	Human, Mouse, Rat, Monkey
<b>Specificity:</b>	Recognizes endogenous levels of CD68 protein.
<b>Immunogen:</b>	KLH-conjugated synthetic peptide encompassing a sequence within the center region of human CD68. The exact sequence is proprietary.
<b>Description:</b>	Rabbit polyclonal antibody to CD68
<b>Uniprot:</b>	P34810(Human), P31996(Mouse)
<b>BiowMW:</b>	Refer to Figures
<b>Buffer:</b>	Liquid in 0.42% Potassium phosphate, 0.87% Sodium chloride, pH 7.3, 30% glycerol, and 0.01% sodium azide.
<b>Storage:</b>	Store at 4°C short term and -20°C long term. Avoid freeze-thaw cycles.
<b>Note:</b>	For research use only, not for use in diagnostic procedure.

### Data:



Western blot analysis of CD68 expression in A549 (A), NS-1 (B), PC12 (C) whole cell lysates.



Immunohistochemical analysis of CD68 staining in human skin formalin fixed paraffin embedded tissue section. The section was pre-treated using heat mediated antigen retrieval with sodium citrate buffer (pH 6.0). The section was then incubated with the antibody at room temperature and detected using an HRP conjugated compact polymer system. DAB was used as the chromogen. The section was then counterstained with haematoxylin and mounted with DPX.