

CDC25A (phospho-S75) Antibody

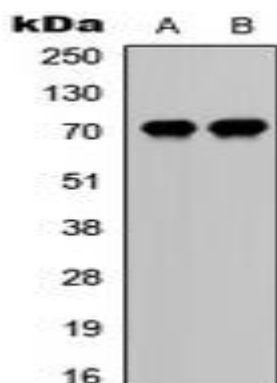
Basic information:

Catalog No.:	UPA02835	Source:	Rabbit
Size:	50ul/100ul	Clonality:	Polyclonal
Concentration:	1mg/ml	Isotype:	IgG
Purification:	The antibody was purified by immunogen affinity chromatography.		

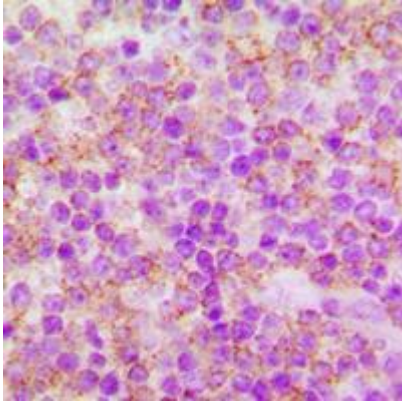
Useful Information:

Applications:	WB: 1:500 - 1:1000 IHC: 1:100-1:200
Reactivity:	Human
Specificity:	Recognizes endogenous levels of CDC25A (pS75) protein.
Immunogen:	KLH-conjugated synthetic peptide encompassing a sequence within the N-term region of human CDC25A (pS75). The exact sequence is proprietary.
Description:	Rabbit polyclonal antibody to CDC25A (pS75)
Uniprot:	P30304(Human)
BiowMW:	Refer to Figures
Buffer:	Liquid in 0.42% Potassium phosphate, 0.87% Sodium chloride, pH 7.3, 30% glycerol, and 0.01% sodium azide.
Storage:	Store at 4°C short term and -20°C long term. Avoid freeze-thaw cycles.
Note:	For research use only, not for use in diagnostic procedure.

Data:



Western blot analysis of CDC25A (phospho-S75) expression in HeLa UV-treated (A), mouse liver (B) whole cell lysates.



Immunohistochemical analysis of CDC25A (phospho-S75) staining in human tonsil formalin fixed paraffin embedded tissue section. The section was pre-treated using heat mediated antigen retrieval with sodium citrate buffer (pH 6.0). The section was then incubated with the antibody at room temperature and detected using an HRP conjugated compact polymer system. DAB was used as the chromogen. The section was then counterstained with haematoxylin and mounted with DPX.