

Claudin 3 Antibody

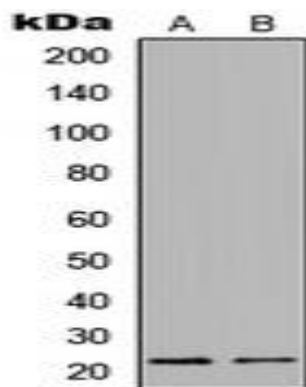
Basic information:

Catalog No.:	UPA02856	Source:	Rabbit
Size:	50ul/100ul	Clonality:	Polyclonal
Concentration:	1mg/ml	Isotype:	IgG
Purification:	The antibody was purified by immunogen affinity chromatography.		

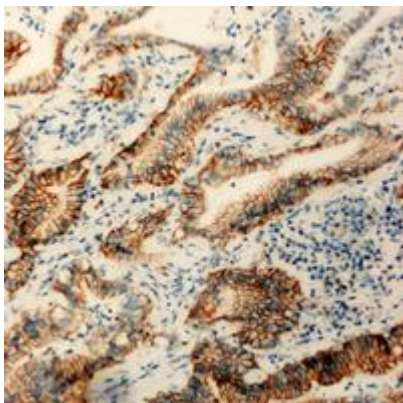
Useful Information:

Applications:	WB: 1:500 - 1:1000 IHC: 1:100-1:200 IF/IC: 1:100-1:500 IP: 1:10-1:100
Reactivity:	Human, Bovine
Specificity:	Recognizes endogenous levels of Claudin 3 protein.
Immunogen:	KLH-conjugated synthetic peptide encompassing a sequence within the C-term region of human Claudin 3. The exact sequence is proprietary.
Description:	Rabbit polyclonal antibody to Claudin 3
Uniprot:	O15551(Human)
BiowMW:	Refer to Figures
Buffer:	Liquid in 0.42% Potassium phosphate, 0.87% Sodium chloride, pH 7.3, 30% glycerol, and 0.01% sodium azide.
Storage:	Store at 4°C short term and -20°C long term. Avoid freeze-thaw cycles.
Note:	For research use only, not for use in diagnostic procedure.

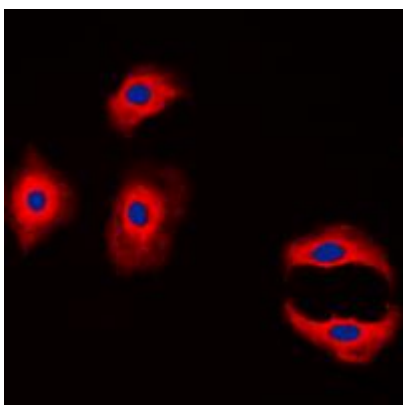
Data:



Western blot analysis of Claudin 3 expression in SW480 (A), LOVO (B) whole cell lysates.



Immunohistochemical analysis of Claudin 3 staining in human colon cancer formalin fixed paraffin embedded tissue section. The section was pre-treated using heat mediated antigen retrieval with sodium citrate buffer (pH 6.0). The section was then incubated with the antibody at room temperature and detected using an HRP conjugated compact polymer system. DAB was used as the chromogen. The section was then counterstained with haematoxylin and mounted with DPX.



Immunofluorescent analysis of Claudin 3 staining in MCF7 cells. Formalin-fixed cells were permeabilized with 0.1% Triton X-100 in TBS for 5-10 minutes and blocked with 3% BSA-PBS for 30 minutes at room temperature. Cells were probed with the primary antibody in 3% BSA-PBS and incubated overnight at 4 °C in a humidified chamber. Cells were washed with PBST and incubated with a DyLight 594-conjugated secondary antibody (red) in PBS at room temperature in the dark. DAPI was used to stain the cell nuclei (blue).