

# Cystatin 1 Antibody

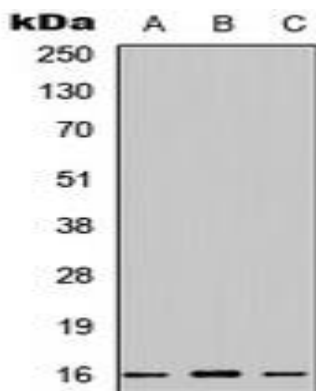
## Basic information:

|                       |   |                   |            |
|-----------------------|---|-------------------|------------|
| <b>Catalog No.:</b>   | UPA02879  | <b>Source:</b>    | Rabbit     |
| <b>Size:</b>          | 50ul/100ul  | <b>Clonality:</b> | Polyclonal |
| <b>Concentration:</b> | 1mg/ml  | <b>Isotype:</b>   | IgG        |
| <b>Purification:</b>  | The antibody was purified by immunogen affinity chromatography. |                   |            |

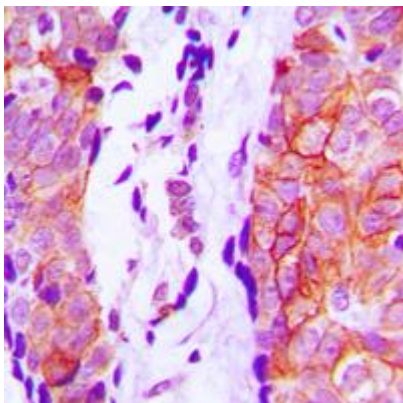
## Useful Information:

|                      |   |
|----------------------|---|
|                      | WB: 1:500 - 1:1000  |
| <b>Applications:</b> | IHC: 1:100-1:200<br>IF/IC: 1:100-1:500  |
| <b>Reactivity:</b>   | Human, Mouse, Rat   |
| <b>Specificity:</b>  | Recognizes endogenous levels of Cystatin 1 protein.   |
| <b>Immunogen:</b>    | KLH-conjugated synthetic peptide encompassing a sequence within the center region of human Cystatin 1. The exact sequence is proprietary. |
| <b>Description:</b>  | Rabbit polyclonal antibody to Cystatin 1  |
| <b>Uniprot:</b>      | P01037(Human)   |
| <b>BiowMW:</b>       | Refer to Figures  |
| <b>Buffer:</b>       | Liquid in 0.42% Potassium phosphate, 0.87% Sodium chloride, pH 7.3, 30% glycerol, and 0.01% sodium azide.                                 |
| <b>Storage:</b>      | Store at 4°C short term and -20°C long term. Avoid freeze-thaw cycles.  |
| <b>Note:</b>         | For research use only, not for use in diagnostic procedure.   |

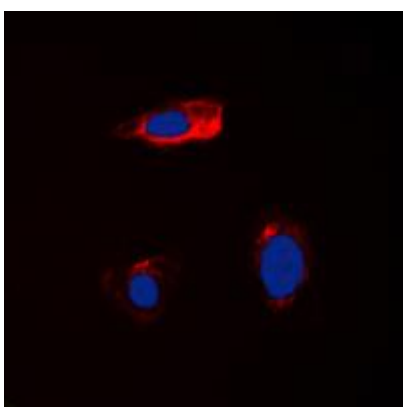
## Data:



Western blot analysis of Cystatin 1 expression in HEK293T (A), NS-1 (B), PC12 (C) whole cell lysates.



Immunohistochemical analysis of Cystatin 1 staining in human prostate formalin fixed paraffin embedded tissue section. The section was pre-treated using heat mediated antigen retrieval with sodium citrate buffer (pH 6.0). The section was then incubated with the antibody at room temperature and detected using an HRP conjugated compact polymer system. DAB was used as the chromogen. The section was then counterstained with haematoxylin and mounted with DPX.



Immunofluorescent analysis of Cystatin 1 staining in HEK293T cells. Formalin-fixed cells were permeabilized with 0.1% Triton X-100 in TBS for 5-10 minutes and blocked with 3% BSA-PBS for 30 minutes at room temperature. Cells were probed with the primary antibody in 3% BSA-PBS and incubated overnight at 4 °C in a humidified chamber. Cells were washed with PBST and incubated with a DyLight 594-conjugated secondary antibody (red) in PBS at room temperature in the dark. DAPI was used to stain the cell nuclei (blue).