

## Histone H2A.X Antibody

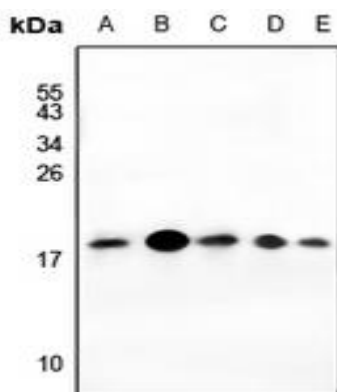
### Basic information:

<b>Catalog No.:</b>	UPA03425	<b>Source:</b>	Rabbit
<b>Size:</b>	50ul/100ul	<b>Clonality:</b>	Polyclonal
<b>Concentration:</b>	1mg/ml	<b>Isotype:</b>	IgG
<b>Purification:</b>	The antibody was purified by immunogen affinity chromatography.		

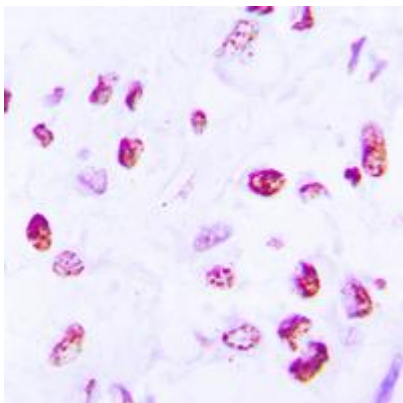
### Useful Information:

<b>Applications:</b>	WB (1:500 - 1:1000), IHC (1:100 - 1:200), IF/ICC (1:100 - 1:500)
<b>Reactivity:</b>	Human, Mouse, Rat
<b>Specificity:</b>	Recognizes endogenous levels of Histone H2A.X protein.
<b>Immunogen:</b>	KLH-conjugated synthetic peptide encompassing a sequence within the C-term region of human Histone H2A.X. The exact sequence is proprietary.
<b>Description:</b>	Rabbit polyclonal antibody to Histone H2A.X
<b>Uniprot:</b>	P16104
<b>BiowMW:</b>	Refer to Figures
<b>Buffer:</b>	Liquid in 0.42% Potassium phosphate, 0.87% Sodium chloride, pH 7.3, 30% glycerol, and 0.01% Thimerosal.
<b>Storage:</b>	Shipped at 4°C. Upon delivery aliquot and store at -20°C for one year. Avoid freeze/thaw cycles.
<b>Note:</b>	For research use only, not for use in diagnostic procedure.

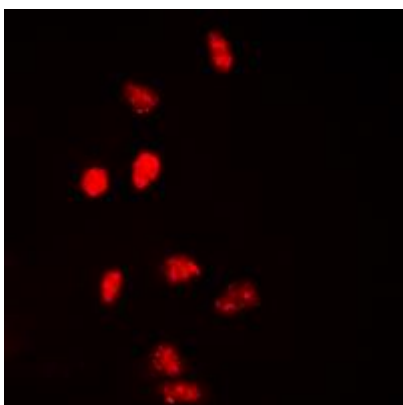
### Data:



Western blot analysis of Histone H2A.X expression in Panc1 (A), HCT116 (B), A549 (C), rat testis (D), CT26 (E) whole cell lysates. (Predicted band size: 15 kD; Observed band size: 17 kD)



Immunohistochemical analysis of Histone H2A.X staining in human lung cancer formalin fixed paraffin embedded tissue section. The section was pre-treated using heat mediated antigen retrieval with sodium citrate buffer (pH 6.0). The section was then incubated with the antibody at room temperature and detected using an HRP conjugated compact polymer system. DAB was used as the chromogen. The section was then counterstained with haematoxylin and mounted with DPX.



Immunofluorescent analysis of Histone H2A.X staining in HepG2 cells. Formalin-fixed cells were permeabilized with 0.1% Triton X-100 in TBS for 5-10 minutes and blocked with 3% BSA-PBS for 30 minutes at room temperature. Cells were probed with the primary antibody in 3% BSA-PBS and incubated overnight at 4 °C in a humidified chamber. Cells were washed with PBST and incubated with a DyLight 594-conjugated secondary antibody (red) in PBS at room temperature in the dark.