

HSD11B1 Antibody

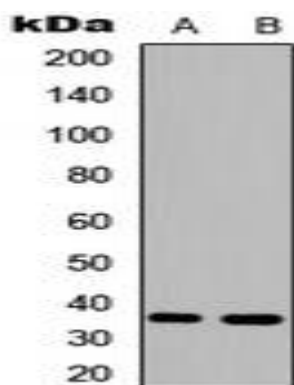
Basic information:

Catalog No.:	UPA03431	Source:	Rabbit
Size:	50ul/100ul	Clonality:	Polyclonal
Concentration:	1mg/ml	Isotype:	IgG
Purification:	The antibody was purified by immunogen affinity chromatography.		

Useful Information:

Applications:	WB (1:500 - 1:1000)
Reactivity:	Human, Dog, Rabbit
Specificity:	Recognizes endogenous levels of HSD11B1 protein.
Immunogen:	KLH-conjugated synthetic peptide encompassing a sequence within the N-term region of human HSD11B1. The exact sequence is proprietary.
Description:	Rabbit polyclonal antibody to HSD11B1
Uniprot:	P28845
BiowMW:	Refer to Figures
Buffer:	Liquid in 0.42% Potassium phosphate, 0.87% Sodium chloride, pH 7.3, 30% glycerol, and 0.01% Thimerosal.
Storage:	Shipped at 4°C. Upon delivery aliquot and store at -20°C for one year. Avoid freeze/thaw cycles.
Note:	For research use only, not for use in diagnostic procedure.

Data:



Western blot analysis of HSD11B1 expression in Raji (A), K562 (B) whole cell lysates. (Predicted band size: 32 kD; Observed band size: 35 kD)