

CD130 Antibody

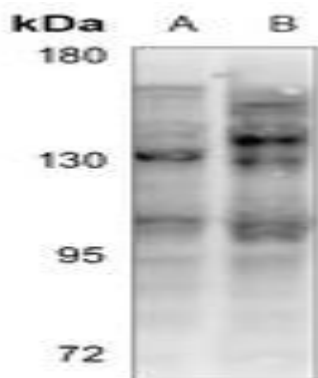
Basic information:

Catalog No.:	UPA03438	Source:	Rabbit
Size:	50ul/100ul	Clonality:	Polyclonal
Concentration:	1mg/ml	Isotype:	IgG
Purification:	The antibody was purified by immunogen affinity chromatography.		

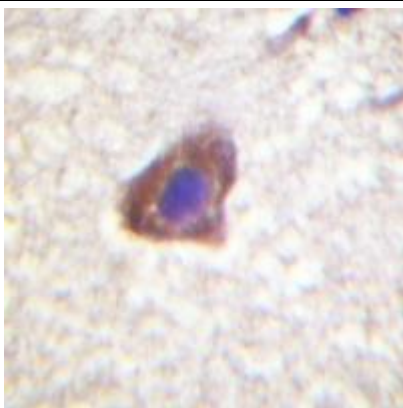
Useful Information:

Applications:	WB (1:500 - 1:1000), IHC (1:50 - 1:100), IF/ICC (1:50 - 1:200)
Reactivity:	Human, Mouse, Rat, Chicken, Monkey, Pig
Specificity:	Recognizes endogenous levels of CD130 protein.
Immunogen:	KLH-conjugated synthetic peptide encompassing a sequence within the C-term region of human CD130. The exact sequence is proprietary.
Description:	Rabbit polyclonal antibody to CD130
Uniprot:	P40189
BiowMW:	Refer to Figures
Buffer:	Liquid in 0.42% Potassium phosphate, 0.87% Sodium chloride, pH 7.3, 30% glycerol, and 0.01% Thimerosal.
Storage:	Shipped at 4°C. Upon delivery aliquot and store at -20°C for one year. Avoid freeze/thaw cycles.
Note:	For research use only, not for use in diagnostic procedure.

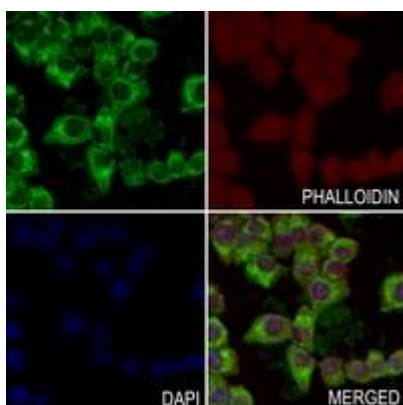
Data:



Western blot analysis of CD130 expression in HCT116 (A), AML12 (B) whole cell lysates. (Predicted band size: 103 kD; Observed band size: 130 kD)



Immunohistochemical analysis of CD130 staining in human brain formalin fixed paraffin embedded tissue section. The section was pre-treated using heat mediated antigen retrieval with sodium citrate buffer (pH 6.0). The section was then incubated with the antibody at room temperature and detected using an HRP conjugated compact polymer system. DAB was used as the chromogen. The section was then counterstained with haematoxylin and mounted with DPX.



Immunofluorescent analysis of CD130 staining in LO2 cells. Formalin-fixed cells were permeabilized with 0.1% Triton X-100 in TBS for 5-10 minutes and blocked with 3% BSA-PBS for 30 minutes at room temperature. Cells were probed with the primary antibody in 3% BSA-PBS and incubated overnight at 4 °C in a humidified chamber. Cells were washed with PBST and incubated with a AF488-conjugated secondary antibody (green) in PBS at room temperature in the dark. Phalloidin - AF594 was used to stain Actin filaments (red). DAPI was used to stain the cell nuclei (blue).