

Islet-2 Antibody

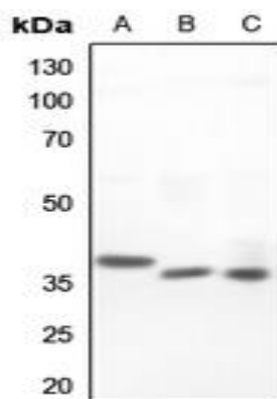
Basic information:

Catalog No.:	UPA03443	Source:	Rabbit
Size:	50ul/100ul	Clonality:	Polyclonal
Concentration:	1mg/ml	Isotype:	IgG
Purification:	The antibody was purified by immunogen affinity chromatography.		

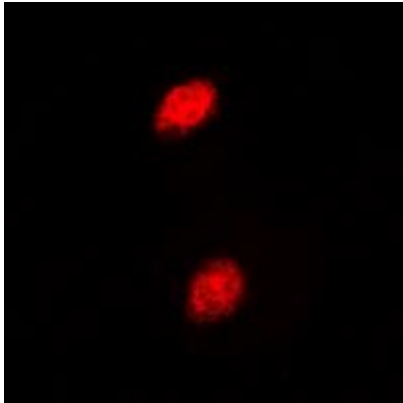
Useful Information:

Applications:	WB (1:500 - 1:1000), IF/ICC (1:100 - 1:500)
Reactivity:	Human, Mouse, Rat, Monkey
Specificity:	Recognizes endogenous levels of Islet-2 protein.
Immunogen:	KLH-conjugated synthetic peptide encompassing a sequence within the center region of human Islet-2. The exact sequence is proprietary.
Description:	Rabbit polyclonal antibody to Islet-2
Uniprot:	Q96A47
BiowMW:	Refer to Figures
Buffer:	Liquid in 0.42% Potassium phosphate, 0.87% Sodium chloride, pH 7.3, 30% glycerol, and 0.01% Thimerosal.
Storage:	Shipped at 4°C. Upon delivery aliquot and store at -20°C for one year. Avoid freeze/thaw cycles.
Note:	For research use only, not for use in diagnostic procedure.

Data:



Western blot analysis of Islet-2 expression in HeLa (A), mouse liver (B), rat liver (C) whole cell lysates. (Predicted band size: 39 kD; Observed band size: 40 kD)



Immunofluorescent analysis of Islet-2 staining in HEK293T cells. Formalin-fixed cells were permeabilized with 0.1% Triton X-100 in TBS for 5-10 minutes and blocked with 3% BSA-PBS for 30 minutes at room temperature. Cells were probed with the primary antibody in 3% BSA-PBS and incubated overnight at 4 °C in a humidified chamber. Cells were washed with PBST and incubated with a DyLight 594-conjugated secondary antibody (red) in PBS at room temperature in the dark. DAPI was used to stain the cell nuclei (blue).