

p38 (Phospho-Y323) Antibody

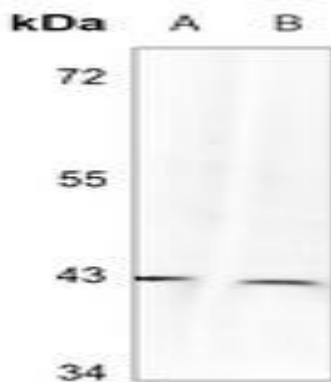
Basic information:

Catalog No.:	UPA03458	Source:	Rabbit
Size:	50ul/100ul	Clonality:	Polyclonal
Concentration:	1mg/ml	Isotype:	IgG
Purification:	The antibody was purified by immunogen affinity chromatography.		

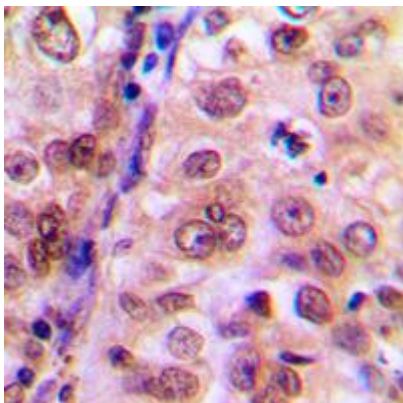
Useful Information:

Applications:	WB (1:500 - 1:1000), IHC (1:100 - 1:200)
Reactivity:	Human, Mouse, Rat, Bovine, Dog, Sheep
Specificity:	Recognizes endogenous levels of p38 protein only when phosphorylated at Y323.
Immunogen:	KLH-conjugated synthetic phosphopeptide corresponding to residues surrounding Y323 of human p38 protein. The exact sequence is proprietary.
Description:	Rabbit polyclonal antibody to p38 (Phospho-Y323)
Uniprot:	Q16539
BiowMW:	Refer to Figures
Buffer:	Liquid in 0.42% Potassium phosphate, 0.87% Sodium chloride, pH 7.3, 30% glycerol, and 0.01% Thimerosal.
Storage:	Shipped at 4°C. Upon delivery aliquot and store at -20°C for one year. Avoid freeze/thaw cycles.
Note:	For research use only, not for use in diagnostic procedure.

Data:



Western blot analysis of p38 (Phospho-Y323) expression in MEF (A), C6 (B) whole cell lysates. (Predicted band size: 41 kD; Observed band size: 43 kD)



Immunohistochemical analysis of p38 (Phospho-Y323) staining in human breast cancer formalin fixed paraffin embedded tissue section. The section was pre-treated using heat mediated antigen retrieval with sodium citrate buffer (pH 6.0). The section was then incubated with the antibody at room temperature and detected using an HRP conjugated compact polymer system. DAB was used as the chromogen. The section was then counterstained with haematoxylin and mounted with DPX.