

MEF2D (Phospho-S444) Antibody

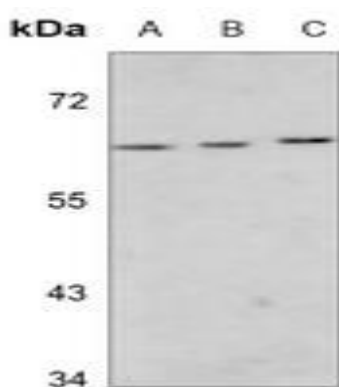
Basic information:

Catalog No.:	UPA03462	Source:	Rabbit
Size:	50ul/100ul	Clonality:	Polyclonal
Concentration:	1mg/ml	Isotype:	IgG
Purification:	The antibody was purified by immunogen affinity chromatography.		

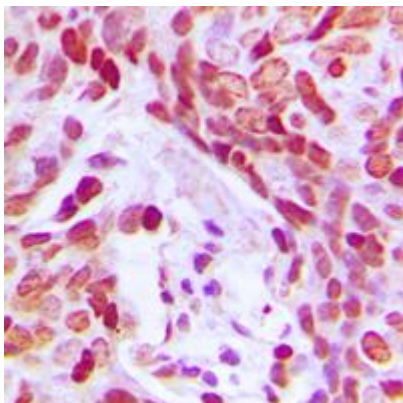
Useful Information:

Applications:	WB (1:500 - 1:1000), IHC (1:100 - 1:200)
Reactivity:	Human, Mouse, Rat, Bovine, Pig
Specificity:	Recognizes endogenous levels of MEF2D protein only when phosphorylated at S444.
Immunogen:	KLH-conjugated synthetic phosphopeptide corresponding to residues surrounding S444 of human MEF2D protein. The exact sequence is proprietary.
Description:	Rabbit polyclonal antibody to MEF2D (Phospho-S444)
Uniprot:	Q14814
BiowMW:	Refer to Figures
Buffer:	Liquid in 0.42% Potassium phosphate, 0.87% Sodium chloride, pH 7.3, 30% glycerol, and 0.01% Thimerosal.
Storage:	Shipped at 4°C. Upon delivery aliquot and store at -20°C for one year. Avoid freeze/thaw cycles.
Note:	For research use only, not for use in diagnostic procedure.

Data:



Western blot analysis of MEF2D (Phospho-S444) expression in HEK293T (A), Jurkat (B), U2OS (C) whole cell lysates. (Predicted band size: 55 kD; Observed band size: 70 kD)



Immunohistochemical analysis of MEF2D (Phospho-S444) staining in human breast cancer formalin fixed paraffin embedded tissue section. The section was pre-treated using heat mediated antigen retrieval with sodium citrate buffer (pH 6.0). The section was then incubated with the antibody at room temperature and detected using an HRP conjugated compact polymer system. DAB was used as the chromogen. The section was then counterstained with haematoxylin and mounted with DPX.