

## MEKKK6 Antibody

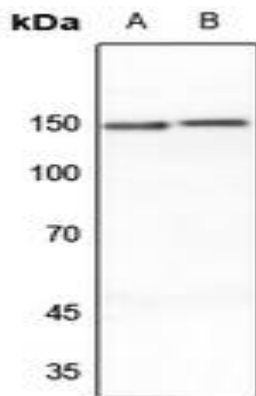
### Basic information:

<b>Catalog No.:</b>	UPA03465	<b>Source:</b>	Rabbit
<b>Size:</b>	50ul/100ul	<b>Clonality:</b>	Polyclonal
<b>Concentration:</b>	1mg/ml	<b>Isotype:</b>	IgG
<b>Purification:</b>	The antibody was purified by immunogen affinity chromatography.		

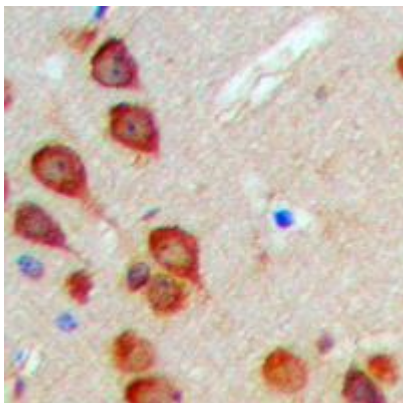
### Useful Information:

<b>Applications:</b>	WB (1:500 - 1:1000), IHC (1:50 - 1:100), IF/ICC (1:50 - 1:200)
<b>Reactivity:</b>	Human, Mouse, Rat, Bovine
<b>Specificity:</b>	Recognizes endogenous levels of MEKKK6 protein.
<b>Immunogen:</b>	KLH-conjugated synthetic peptide encompassing a sequence within the center region of human MEKKK6. The exact sequence is proprietary.
<b>Description:</b>	Rabbit polyclonal antibody to MEKKK6
<b>Uniprot:</b>	Q8N4C8
<b>BiowMW:</b>	Refer to Figures
<b>Buffer:</b>	Liquid in 0.42% Potassium phosphate, 0.87% Sodium chloride, pH 7.3, 30% glycerol, and 0.01% Thimerosal.
<b>Storage:</b>	Shipped at 4°C. Upon delivery aliquot and store at -20°C for one year. Avoid freeze/thaw cycles.
<b>Note:</b>	For research use only, not for use in diagnostic procedure.

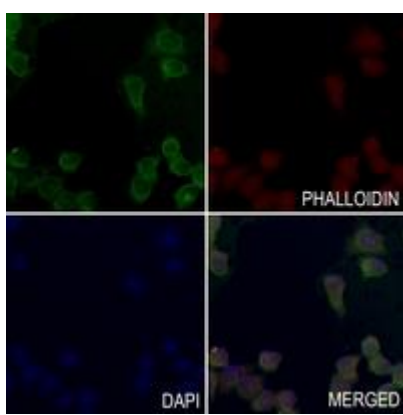
### Data:



Western blot analysis of MEKKK6 expression in mouse brain (A), rat brain (B) whole cell lysates. (Predicted band size: 149 kD; Observed band size: 150 kD)



Immunohistochemical analysis of MEKKK6 staining in human brain formalin fixed paraffin embedded tissue section. The section was pre-treated using heat mediated antigen retrieval with sodium citrate buffer (pH 6.0). The section was then incubated with the antibody at room temperature and detected using an HRP conjugated compact polymer system. DAB was used as the chromogen. The section was then counterstained with haematoxylin and mounted with DPX.



Immunofluorescent analysis of MEKKK6 staining in LO2 cells. Formalin-fixed cells were permeabilized with 0.1% Triton X-100 in TBS for 5-10 minutes and blocked with 3% BSA-PBS for 30 minutes at room temperature. Cells were probed with the primary antibody in 3% BSA-PBS and incubated overnight at 4 °C in a humidified chamber. Cells were washed with PBST and incubated with a AF488-conjugated secondary antibody (green) in PBS at room temperature in the dark. Phalloidin - AF594 was used to stain Actin filaments (red). DAPI was used to stain the cell nuclei (blue).