

SP1 (Phospho-T739) Antibody

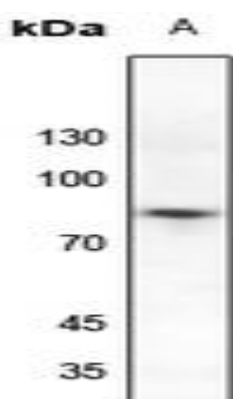
Basic information:

Catalog No.:	UPA03525	Source:	Rabbit
Size:	50ul/100ul	Clonality:	Polyclonal
Concentration:	1mg/ml	Isotype:	IgG
Purification:	The antibody was purified by immunogen affinity chromatography.		

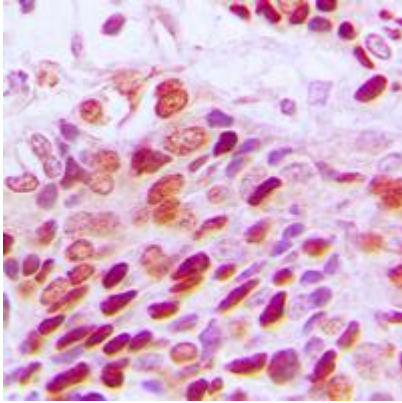
Useful Information:

Applications:	WB (1:500 - 1:1000), IHC (1:100 - 1:200)
Reactivity:	Human, Rat, Bovine, Monkey
Specificity:	Recognizes endogenous levels of SP1 protein only when phosphorylated at T739.
Immunogen:	KLH-conjugated synthetic phosphopeptide corresponding to residues surrounding T739 of human SP1 protein. The exact sequence is proprietary.
Description:	Rabbit polyclonal antibody to SP1 (Phospho-T739)
Uniprot:	P08047
BiowMW:	Refer to Figures
Buffer:	Liquid in 0.42% Potassium phosphate, 0.87% Sodium chloride, pH 7.3, 30% glycerol, and 0.01% Thimerosal.
Storage:	Shipped at 4°C. Upon delivery aliquot and store at -20°C for one year. Avoid freeze/thaw cycles.
Note:	For research use only, not for use in diagnostic procedure.

Data:



Western blot analysis of SP1 (Phospho-T739) expression in H1688 (A) whole cell lysates. (Predicted band size: 80 kD; Observed band size: 80 kD)



Immunohistochemical analysis of SP1 (Phospho-T739) staining in human breast cancer formalin fixed paraffin embedded tissue section. The section was pre-treated using heat mediated antigen retrieval with sodium citrate buffer (pH 6.0). The section was then incubated with the antibody at room temperature and detected using an HRP conjugated compact polymer system. DAB was used as the chromogen. The section was then counterstained with haematoxylin and mounted with DPX.