

## VASP (Phospho-S238) Antibody

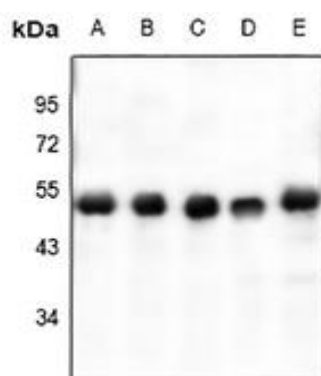
### Basic information:

<b>Catalog No.:</b>	UPA03543	<b>Source:</b>	Rabbit
<b>Size:</b>	50ul/100ul	<b>Clonality:</b>	Polyclonal
<b>Concentration:</b>	1mg/ml	<b>Isotype:</b>	IgG
<b>Purification:</b>	The antibody was purified by immunogen affinity chromatography.		

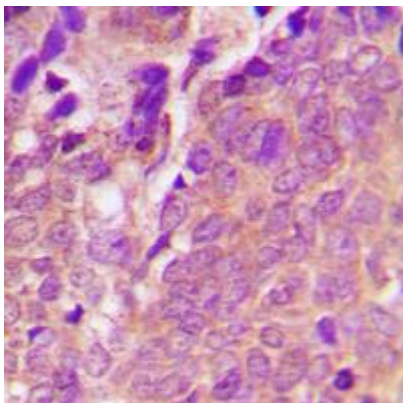
### Useful Information:

<b>Applications:</b>	WB (1:500 - 1:1000), IHC (1:100 - 1:200)
<b>Reactivity:</b>	Human, Mouse, Rat, Bovine, Dog
<b>Specificity:</b>	Recognizes endogenous levels of VASP protein only when phosphorylated at S238.
<b>Immunogen:</b>	KLH-conjugated synthetic phosphopeptide corresponding to residues surrounding S238 of human VASP protein. The exact sequence is proprietary.
<b>Description:</b>	Rabbit polyclonal antibody to VASP (Phospho-S238)
<b>Uniprot:</b>	P50552
<b>BiowMW:</b>	Refer to Figures
<b>Buffer:</b>	Liquid in 0.42% Potassium phosphate, 0.87% Sodium chloride, pH 7.3, 30% glycerol, and 0.01% Thimerosal.
<b>Storage:</b>	Shipped at 4°C. Upon delivery aliquot and store at -20°C for one year. Avoid freeze/thaw cycles.
<b>Note:</b>	For research use only, not for use in diagnostic procedure.

### Data:



Western blot analysis of VASP (Phospho-S238) expression in K562 (A), A375 (B), HeLa (C), rat uterus (D), 3T3L1 (E) whole cell lysates. (Predicted band size: 39 kD; Observed band size: 50 kD)



Immunohistochemical analysis of VASP (Phospho-S238) staining in human breast cancer formalin fixed paraffin embedded tissue section. The section was pre-treated using heat mediated antigen retrieval with sodium citrate buffer (pH 6.0). The section was then incubated with the antibody at room temperature and detected using an HRP conjugated compact polymer system. DAB was used as the chromogen. The section was then counterstained with haematoxylin and mounted with DPX.