

Histone H3 Polyclonal Antibody

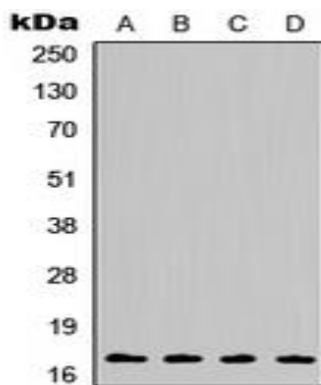
Basic information:

| | | | |
|-----------------------|---|-------------------|------------|
| Catalog No.: | UPA03672 | Source: | Rabbit |
| Size: | 50ul/100ul | Clonality: | Polyclonal |
| Concentration: | 1mg/ml | Isotype: | IgG |
| Purification: | The antibody was purified by immunogen affinity chromatography. | | |

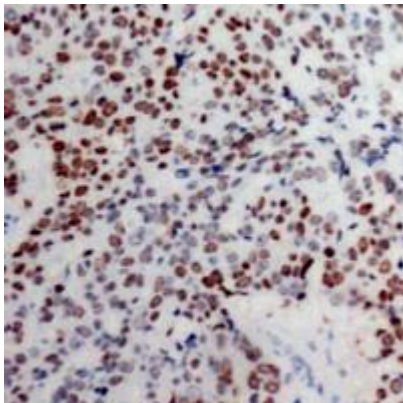
Useful Information:

| | |
|----------------------|---|
| Applications: | WB: 1:500 - 1:1000 IHC: 1:100-1:200 |
| Reactivity: | Human, Mouse, Rat, Bovine, Chicken, Zebrafish |
| Specificity: | Recognizes endogenous levels of Histone H3 protein. |
| Immunogen: | KLH-conjugated synthetic peptide encompassing a sequence within the N-term region of human Histone H3. The exact sequence is proprietary. |
| Description: | Rabbit polyclonal antibody to Histone H3 |
| Uniprot: | P68431; Q71D13; P84243(Human), P68433; P84228; P84244(Mouse), Q6LED0; P84245(Rat) |
| BiowMW: | Refer to Figures |
| Buffer: | Liquid in 0.42% Potassium phosphate, 0.87% Sodium chloride, pH 7.3, 30% glycerol, and 0.01% sodium azide. |
| Storage: | Store at 4°C short term and -20°C long term. Avoid freeze-thaw cycles. |
| Note: | For research use only, not for use in diagnostic procedure. |

Data:



Western blot analysis of Histone H3 expression in HEK293T (A), HuvEc (B), mouse kidney (C), rat liver (D) whole cell lysates.



Immunohistochemical analysis of Histone H3 staining in human breast cancer formalin fixed paraffin embedded tissue section. The section was pre-treated using heat mediated antigen retrieval with sodium citrate buffer (pH 6.0). The section was then incubated with the antibody at room temperature and detected using an HRP conjugated compact polymer system. DAB was used as the chromogen. The section was then counterstained with haematoxylin and mounted with DPX.