

ATP5C1 Antibody

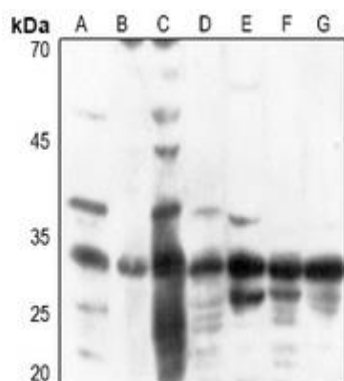
Basic information:

Catalog No.:	UPA04001	Source:	Rabbit
Size:	50ul/100ul	Clonality:	Polyclonal
Concentration:	1mg/ml	Isotype:	IgG
Purification:	The antibody was purified by immunogen affinity chromatography.		

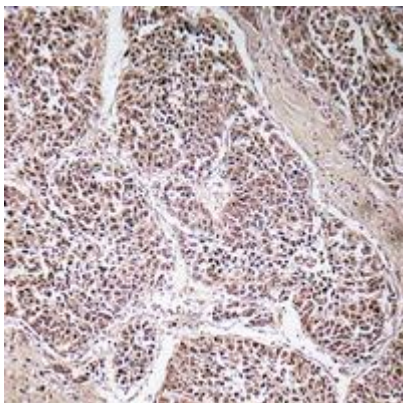
Useful Information:

Applications:	WB (1:500 - 1:1000), IHC (1:100 - 1:200)
Reactivity:	Human, Mouse, Rat, Monkey
Specificity:	Recognizes endogenous levels of ATP5C1 protein.
Immunogen:	KLH-conjugated synthetic peptide encompassing a sequence within the center region of human ATP5C1. The exact sequence is proprietary.
Description:	Rabbit polyclonal antibody to ATP5C1
Uniprot:	P36542
BiowMW:	Refer to Figures
Buffer:	Liquid in 0.42% Potassium phosphate, 0.87% Sodium chloride, pH 7.3, 30% glycerol, and 0.01% Thimerosal.
Storage:	Shipped at 4°C. Upon delivery aliquot and store at -20°C for one year. Avoid freeze/thaw cycles.
Note:	For research use only, not for use in diagnostic procedure.

Data:



Western blot analysis of ATP5C1 expression in HEK293T (A), Hela (B), DLD (C), mouse liver (D), mouse kidney (E), rat liver (F), rat kidney (G) whole cell lysates. (Predicted band size: 32 kD; Observed band size: 33 kD)



Immunohistochemical analysis of ATP5C1 staining in human liver cancer formalin fixed paraffin embedded tissue section. The section was pre-treated using heat mediated antigen retrieval with sodium citrate buffer (pH 6.0). The section was then incubated with the antibody at room temperature and detected using an HRP conjugated compact polymer system. DAB was used as the chromogen. The section was then counter-stained with haematoxylin and mounted with DPX.