

Myosin 14 Antibody

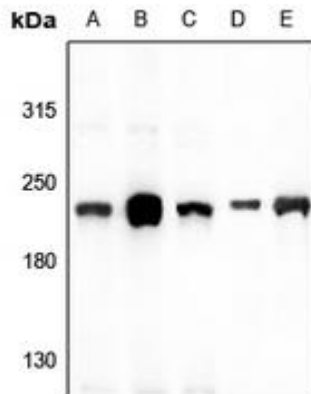
Basic information:

Catalog No.:	UPA04013	Source:	Rabbit
Size:	50ul/100ul	Clonality:	Polyclonal
Concentration:	1mg/ml	Isotype:	IgG
Purification:	The antibody was purified by immunogen affinity chromatography.		

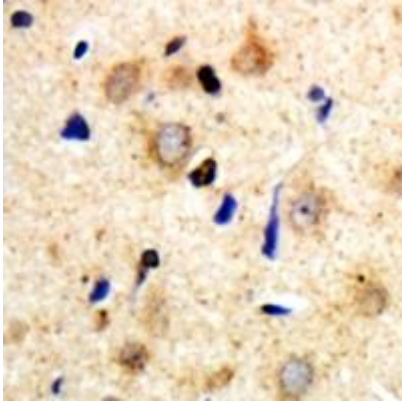
Useful Information:

Applications:	WB (1:500 - 1:1000), IHC (1:100 - 1:200)
Reactivity:	Human, Mouse, Rat
Specificity:	Recognizes endogenous levels of Myosin 14 protein.
Immunogen:	KLH-conjugated synthetic peptide encompassing a sequence within the center region of human Myosin 14. The exact sequence is proprietary.
Description:	Rabbit polyclonal antibody to Myosin 14
Uniprot:	Q7Z406
BiowMW:	Refer to Figures
Buffer:	Liquid in 0.42% Potassium phosphate, 0.87% Sodium chloride, pH 7.3, 30% glycerol, and 0.01% Thimerosal.
Storage:	Shipped at 4°C. Upon delivery aliquot and store at -20°C for one year. Avoid freeze/thaw cycles.
Note:	For research use only, not for use in diagnostic procedure.

Data:



Western blot analysis of Myosin 14 expression in H1792 (A), HEK293T (B), HepG2 (C), mouse liver (D), rat liver (E) whole cell lysates. (Predicted band size: 227 kD; Observed band size: 228 kD)



Immunohistochemical analysis of Myosin 14 staining in human brain formalin fixed paraffin embedded tissue section. The section was pre-treated using heat mediated antigen retrieval with sodium citrate buffer (pH 6.0). The section was then incubated with the antibody at room temperature and detected using an HRP conjugated compact polymer system. DAB was used as the chromogen. The section was then counterstained with haematoxylin and mounted with DPX.