

TAF5L Antibody

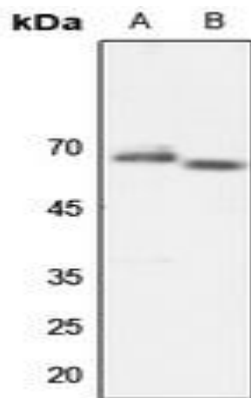
Basic information:

Catalog No.:	UPA04123	Source:	Rabbit
Size:	50ul/100ul	Clonality:	Polyclonal
Concentration:	1mg/ml	Isotype:	IgG
Purification:	The antibody was purified by immunogen affinity chromatography.		

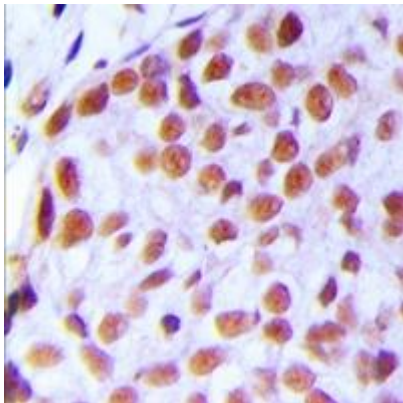
Useful Information:

Applications:	WB (1:500 - 1:1000), IHC (1:100 - 1:200)
Reactivity:	Human, Dog, Monkey, Rabbit
Specificity:	Recognizes endogenous levels of TAF5L protein.
Immunogen:	KLH-conjugated synthetic peptide encompassing a sequence within the center region of human TAF5L. The exact sequence is proprietary.
Description:	Rabbit polyclonal antibody to TAF5L
Uniprot:	O75529
BiowMW:	Refer to Figures
Buffer:	Liquid in 0.42% Potassium phosphate, 0.87% Sodium chloride, pH 7.3, 30% glycerol, and 0.01% Thimerosal.
Storage:	Shipped at 4°C. Upon delivery aliquot and store at -20°C for one year. Avoid freeze/thaw cycles.
Note:	For research use only, not for use in diagnostic procedure.

Data:



Western blot analysis of TAF5L expression in HEK293T (A), HeLa (B) whole cell lysates. (Predicted band size: 66 kD; Observed band size: 66 kD)



Immunohistochemical analysis of TAF5L staining in human breast cancer formalin fixed paraffin embedded tissue section. The section was pre-treated using heat mediated antigen retrieval with sodium citrate buffer (pH 6.0). The section was then incubated with the antibody at room temperature and detected using an HRP conjugated compact polymer system. DAB was used as the chromogen. The section was then counterstained with haematoxylin and mounted with DPX.