

## LDLRAD1 Antibody

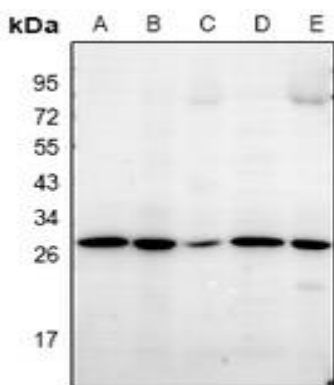
### Basic information:

<b>Catalog No.:</b>	UPA04585	<b>Source:</b>	Rabbit
<b>Size:</b>	50ul/100ul	<b>Clonality:</b>	Polyclonal
<b>Concentration:</b>	1mg/ml	<b>Isotype:</b>	IgG
<b>Purification:</b>	The antibody was purified by immunogen affinity chromatography.		

### Useful Information:

<b>Applications:</b>	WB (1:500 - 1:1000)
<b>Reactivity:</b>	Human, Mouse, Rat
<b>Specificity:</b>	Recognizes endogenous levels of LDLRAD1 protein.
<b>Immunogen:</b>	KLH-conjugated synthetic peptide encompassing a sequence within the center region of human LDLRAD1. The exact sequence is proprietary.
<b>Description:</b>	Rabbit polyclonal antibody to LDLRAD1
<b>Uniprot:</b>	Q5T700
<b>BiowMW:</b>	Refer to Figures
<b>Buffer:</b>	Liquid in 0.42% Potassium phosphate, 0.87% Sodium chloride, pH 7.3, 30% glycerol, and 0.01% Thimerosal.
<b>Storage:</b>	Shipped at 4°C. Upon delivery aliquot and store at -20°C for one year. Avoid freeze/thaw cycles.
<b>Note:</b>	For research use only, not for use in diagnostic procedure.

### Data:



Western blot analysis of LDLRAD1 expression in Jurkat (A), A549 (B), Panc1 (C), MEF (D), PC12 (E) whole cell lysates. (Predicted band size: 21 kD; Observed band size: 26 kD)