

PDXDC1 Antibody

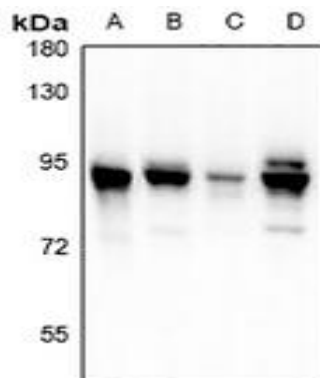
Basic information:

Catalog No.:	UPA04611	Source:	Rabbit
Size:	50ul/100ul	Clonality:	Polyclonal
Concentration:	1mg/ml	Isotype:	IgG
Purification:	The antibody was purified by immunogen affinity chromatography.		

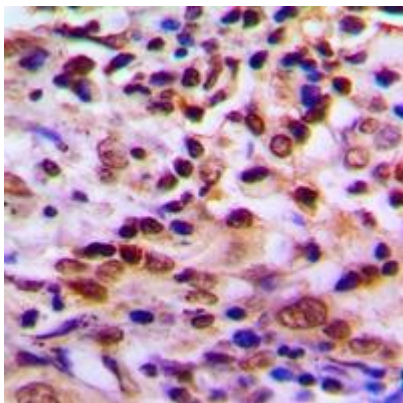
Useful Information:

Applications:	WB (1:500 - 1:1000), IHC (1:50 - 1:100)
Reactivity:	Human
Specificity:	Recognizes endogenous levels of PDXDC1 protein.
Immunogen:	KLH-conjugated synthetic peptide encompassing a sequence within the C-term region of human PDXDC1. The exact sequence is proprietary.
Description:	Rabbit polyclonal antibody to PDXDC1
Uniprot:	Q6P996
BiowMW:	Refer to Figures
Buffer:	Liquid in 0.42% Potassium phosphate, 0.87% Sodium chloride, pH 7.3, 30% glycerol, and 0.01% Thimerosal.
Storage:	Shipped at 4°C. Upon delivery aliquot and store at -20°C for one year. Avoid freeze/thaw cycles.
Note:	For research use only, not for use in diagnostic procedure.

Data:



Western blot analysis of PDXDC1 expression in BV2 (A), PMVEC (B), A549 (C), HeLa (D) whole cell lysates. (Predicted band size: 86 kD; Observed band size: 87 kD)



Immunohistochemical analysis of PDXDC1 staining in human lung cancer formalin fixed paraffin embedded tissue section. The section was pre-treated using heat mediated antigen retrieval with sodium citrate buffer (pH 6.0). The section was then incubated with the antibody at room temperature and detected using an HRP conjugated compact polymer system. DAB was used as the chromogen. The section was then counterstained with haematoxylin and mounted with DPX.