

PTP1B (Phospho-Y66) Antibody

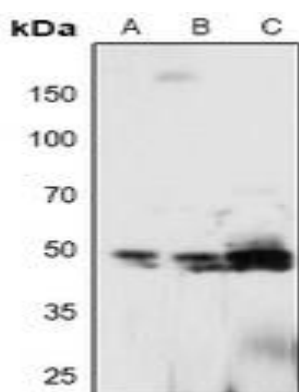
Basic information:

Catalog No.:	UPA04779	Source:	Rabbit
Size:	50ul/100ul	Clonality:	Polyclonal
Concentration:	1mg/ml	Isotype:	IgG
Purification:	The antibody was purified by immunogen affinity chromatography.		

Useful Information:

Applications:	WB (1:500 - 1:1000)
Reactivity:	Human, Mouse, Rat
Specificity:	Recognizes endogenous levels of PTP1B protein only when phosphorylated at Y66.
Immunogen:	KLH-conjugated synthetic phosphopeptide corresponding to residues surrounding Y66 of human PTP1B protein. The exact sequence is proprietary.
Description:	Rabbit polyclonal antibody to PTP1B (Phospho-Y66)
Uniprot:	P18031
BiowMW:	Refer to Figures
Buffer:	Liquid in 0.42% Potassium phosphate, 0.87% Sodium chloride, pH 7.3, 30% glycerol, and 0.01% Thimerosal.
Storage:	Shipped at 4°C. Upon delivery aliquot and store at -20°C for one year. Avoid freeze/thaw cycles.
Note:	For research use only, not for use in diagnostic procedure.

Data:



Western blot analysis of PTP1B (Phospho-Y66) expression in MCF7 (A), A549 (B), mouse lung (C) whole cell lysates. (Predicted band size: 49 kD; Observed band size: 50 kD)