

PKN1/2 (Phospho-T774/816) Antibody

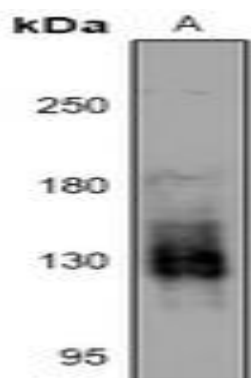
Basic information:

| | | | |
|-----------------------|---|-------------------|------------|
| Catalog No.: | UPA04781 | Source: | Rabbit |
| Size: | 50ul/100ul | Clonality: | Polyclonal |
| Concentration: | 1mg/ml | Isotype: | IgG |
| Purification: | The antibody was purified by immunogen affinity chromatography. | | |

Useful Information:

| | |
|----------------------|--|
| Applications: | WB (1:500 - 1:1000) |
| Reactivity: | Human, Mouse, Rat, Bovine |
| Specificity: | Recognizes endogenous levels of PKN1/2 protein only when phosphorylated at T774/816. |
| Immunogen: | KLH-conjugated synthetic phosphopeptide corresponding to residues surrounding T774/816 of human PKN1/2 protein. The exact sequence is proprietary. |
| Description: | Rabbit polyclonal antibody to PKN1/2 (Phospho-T774/816) |
| Uniprot: | Q16512; Q16513 |
| BiowMW: | Refer to Figures |
| Buffer: | Liquid in 0.42% Potassium phosphate, 0.87% Sodium chloride, pH 7.3, 30% glycerol, and 0.01% Thimerosal. |
| Storage: | Shipped at 4°C. Upon delivery aliquot and store at -20°C for one year. Avoid freeze/thaw cycles. |
| Note: | For research use only, not for use in diagnostic procedure. |

Data:



Western blot analysis of PKN1/2 (Phospho-T774/816) expression in HCT116 (A) whole cell lysates. (Predicted band size: 103; 112 kD; Observed band size: 130 kD)