

Estrogen Receptor alpha Antibody

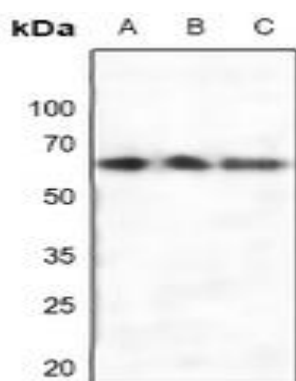
Basic information:

Catalog No.:	UPA04797	Source:	Rabbit
Size:	50ul/100ul	Clonality:	Polyclonal
Concentration:	1mg/ml	Isotype:	IgG
Purification:	The antibody was purified by immunogen affinity chromatography.		

Useful Information:

Applications:	WB (1:500 - 1:1000)
Reactivity:	Human, Rat
Specificity:	Recognizes endogenous levels of Estrogen Receptor alpha protein.
Immunogen:	KLH-conjugated synthetic peptide encompassing a sequence within the center region of human Estrogen Receptor alpha. The exact sequence is proprietary.
Description:	Rabbit polyclonal antibody to Estrogen Receptor alpha
Uniprot:	P03372
BiowMW:	Refer to Figures
Buffer:	Liquid in 0.42% Potassium phosphate, 0.87% Sodium chloride, pH 7.3, 30% glycerol, and 0.01% Thimerosal.
Storage:	Shipped at 4°C. Upon delivery aliquot and store at -20°C for one year. Avoid freeze/thaw cycles.
Note:	For research use only, not for use in diagnostic procedure.

Data:



Western blot analysis of Estrogen Receptor alpha expression in HEK293T (A), K562 (B), rat liver (C) whole cell lysates. (Predicted band size: 66 kD; Observed band size: 66 kD)