

Estrogen Receptor alpha Antibody

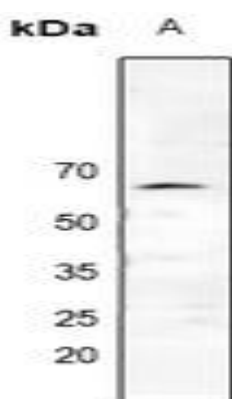
Basic information:

Catalog No.:	UPA04803	Source:	Rabbit
Size:	50ul/100ul	Clonality:	Polyclonal
Concentration:	1mg/ml	Isotype:	
Purification:	The antibody was purified by immunogen affinity chromatography.		

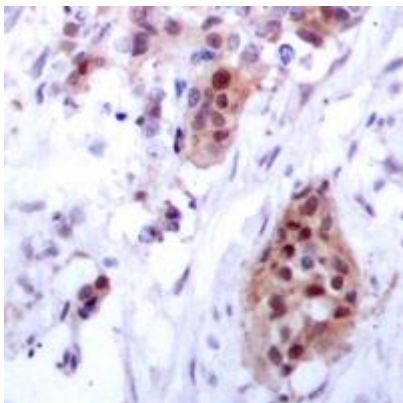
Useful Information:

Applications:	WB (1:500 - 1:1000), IHC (1:50 - 1:100)
Reactivity:	Human, Mouse, Rat, Bovine, Pig
Specificity:	Recognizes endogenous levels of Estrogen Receptor alpha protein.
Immunogen:	KLH-conjugated synthetic peptide encompassing a sequence within the center region of human Estrogen Receptor alpha. The exact sequence is proprietary.
Description:	Rabbit polyclonal antibody to Estrogen Receptor alpha
Uniprot:	P03372
BiowMW:	Refer to Figures
Buffer:	Liquid in 0.42% Potassium phosphate, 0.87% Sodium chloride, pH 7.3, 30% glycerol, and 0.01% Thimerosal.
Storage:	Shipped at 4°C. Upon delivery aliquot and store at -20°C for one year. Avoid freeze/thaw cycles.
Note:	For research use only, not for use in diagnostic procedure.

Data:



Western blot analysis of Estrogen Receptor alpha expression in K562 (A) whole cell lysates. (Predicted band size: 66 kD; Observed band size: 66 kD)



Immunohistochemical analysis of Estrogen Receptor alpha staining in human breast cancer formalin fixed paraffin embedded tissue section. The section was pre-treated using heat mediated antigen retrieval with sodium citrate buffer (pH 6.0). The section was then incubated with the antibody at room temperature and detected using an HRP conjugated compact polymer system. DAB was used as the chromogen. The section was then counterstained with haematoxylin and mounted with DPX.