

## PKC delta Antibody

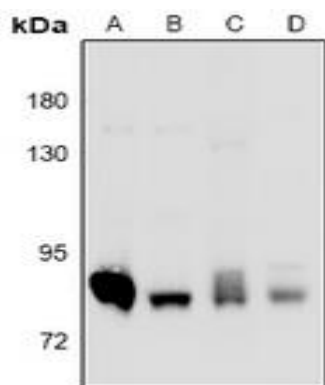
### Basic information:

|                       |   |                   |            |
|-----------------------|---|-------------------|------------|
| <b>Catalog No.:</b>   | UPA04805  | <b>Source:</b>    | Rabbit     |
| <b>Size:</b>          | 50ul/100ul  | <b>Clonality:</b> | Polyclonal |
| <b>Concentration:</b> | 1mg/ml  | <b>Isotype:</b>   |            |
| <b>Purification:</b>  | The antibody was purified by immunogen affinity chromatography. |                   |            |

### Useful Information:

|                      |  |
|----------------------|--|
| <b>Applications:</b> | WB (1:500 - 1:1000)  |
| <b>Reactivity:</b>   | Human, Mouse, Rat  |
| <b>Specificity:</b>  | Recognizes endogenous levels of PKC delta protein.   |
| <b>Immunogen:</b>    | KLH-conjugated synthetic peptide encompassing a sequence within the C-term region of human PKC delta. The exact sequence is proprietary. |
| <b>Description:</b>  | Rabbit polyclonal antibody to PKC delta  |
| <b>Uniprot:</b>      | Q05655   |
| <b>BiowMW:</b>       | Refer to Figures   |
| <b>Buffer:</b>       | Liquid in 0.42% Potassium phosphate, 0.87% Sodium chloride, pH 7.3, 30% glycerol, and 0.01% Thimerosal.                                  |
| <b>Storage:</b>      | Shipped at 4°C. Upon delivery aliquot and store at -20°C for one year. Avoid freeze/thaw cycles.   |
| <b>Note:</b>         | For research use only, not for use in diagnostic procedure.  |

### Data:



Western blot analysis of PKC delta expression in Hela (A), HCT116 (B), mouse lung (C), rat lung (D) whole cell lysates. (Predicted band size: 77 kD; Observed band size: 78 kD)