

Glu-Glu-Tag Polyclonal Antibody

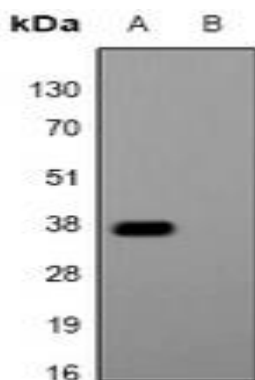
Basic information:

Catalog No.:	UPA05379	Source:	Rabbit
Size:	50ul/100ul	Clonality:	Polyclonal
Concentration:	1mg/ml	Isotype:	IgG
Purification:	The antibody was purified by immunogen affinity chromatography.		

Useful Information:

Applications:	WB: 1:500 - 1:1000 IP: 1:10-1:100
Reactivity:	N/A
Specificity:	Recognizes the Glu-Glu-tag fused to the amino- or carboxy- termini of targeted proteins in transfected or transformed cells.
Immunogen:	KLH-conjugated synthetic peptide EYMPME.
Description:	Rabbit polyclonal antibody to Glu-Glu-tag
Uniprot:	
BiowMW:	Refer to Figures
Buffer:	Liquid in PBS, pH 7.3, 0.2% BSA, and 0.02% sodium azide.
Storage:	Store at 4°C short term and -20°C long term. Avoid freeze-thaw cycles.
Note:	For research use only, not for use in diagnostic procedure.

Data:



Western blot analysis of Anti-Glu-Glu-tag Antibody against HEK293T cells transfected with vector overexpressing Glu-Glu tag (A) and untransfected (B).