

# CLIC1 Antibody

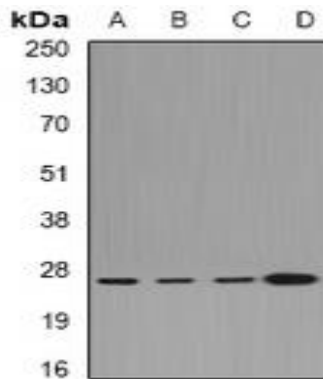
## Basic information:

<b>Catalog No.:</b>	UPA06012	<b>Source:</b>	Rabbit
<b>Size:</b>	50ul/100ul	<b>Clonality:</b>	Polyclonal
<b>Concentration:</b>	1mg/ml	<b>Isotype:</b>	IgG
<b>Purification:</b>	The antibody was purified by immunogen affinity chromatography.		

## Useful Information:

<b>Applications:</b>	WB (1:500 - 1:2000), IF/ICC (1:10 - 1:100)
<b>Reactivity:</b>	Human
<b>Specificity:</b>	Recognizes endogenous levels of CLIC1 protein.
<b>Immunogen:</b>	Recombinant full length protein of human CLIC1
<b>Description:</b>	Rabbit polyclonal antibody to CLIC1
<b>Uniprot:</b>	O00299
<b>BiowMW:</b>	Refer to Figures
<b>Buffer:</b>	Liquid in 0.42% Potassium phosphate, 0.87% Sodium chloride, pH 7.3, 30% glycerol, and 0.01% Thimerosal.
<b>Storage:</b>	Shipped at 4°C. Upon delivery aliquot and store at -20°C for one year. Avoid freeze/thaw cycles.
<b>Note:</b>	For research use only, not for use in diagnostic procedure.

## Data:



Western blot analysis of CLIC1 expression in HeLa (A), HepG2 (B), mouse lung (C), rat kidney (D) whole cell lysates. (Predicted band size: 26 kD; Observed band size: 27 kD)



Immunofluorescent analysis of CLIC1 staining in HeLa cells. Formalin-fixed cells were permeabilized with 0.1% Triton X-100 in TBS for 5-10 minutes and blocked with 3% BSA-PBS for 30 minutes at room temperature. Cells were probed with the primary antibody in 3% BSA-PBS and incubated overnight at 4 °C in a humidified chamber. Cells were washed with PBST and incubated with a DyLight 594-conjugated secondary antibody (red) in PBS at room temperature in the dark.