

MAN2A1 Antibody

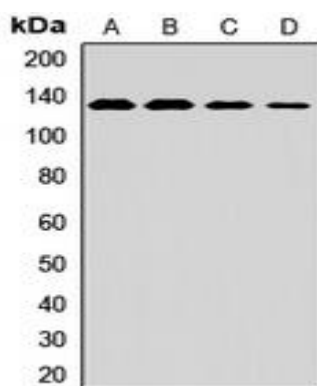
Basic information:

| | | | |
|-----------------------|---|-------------------|------------|
| Catalog No.: | UPA07088 | Source: | Rabbit |
| Size: | 50ul/100ul | Clonality: | Polyclonal |
| Concentration: | 1mg/ml | Isotype: | IgG |
| Purification: | The antibody was purified by immunogen affinity chromatography. | | |

Useful Information:

| | |
|----------------------|---|
| Applications: | WB (1:500 - 1:2000) |
| Reactivity: | Human, Mouse, Rat |
| Specificity: | Recognizes endogenous levels of MAN2A1 protein. |
| Immunogen: | Recombinant full length protein of human MAN2A1 |
| Description: | Rabbit polyclonal antibody to MAN2A1 |
| Uniprot: | Q16706 |
| BiowMW: | Refer to Figures |
| Buffer: | Liquid in 0.42% Potassium phosphate, 0.87% Sodium chloride, pH 7.3, 30% glycerol, and 0.01% Thimerosal. |
| Storage: | Shipped at 4°C. Upon delivery aliquot and store at -20°C for one year. Avoid freeze/thaw cycles. |
| Note: | For research use only, not for use in diagnostic procedure. |

Data:



Western blot analysis of MAN2A1 expression in MCF7 (A), HT29 (B), mouse liver (C), rat liver (D) whole cell lysates. (Predicted band size: 131 kD; Observed band size: 131 kD)