

LEPREL1 Antibody

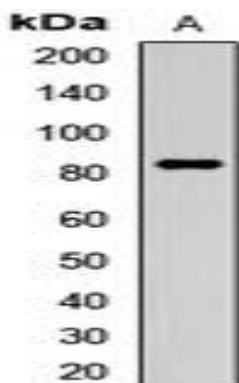
Basic information:

Catalog No.:	UPA08069	Source:	Rabbit
Size:	50ul/100ul	Clonality:	Polyclonal
Concentration:	1mg/ml	Isotype:	IgG
Purification:	The antibody was purified by immunogen affinity chromatography.		

Useful Information:

Applications:	WB (1:500 - 1:2000)
Reactivity:	Human, Mouse, Rat
Specificity:	Recognizes endogenous levels of LEPREL1 protein.
Immunogen:	Recombinant full length protein of human LEPREL1
Description:	Rabbit polyclonal antibody to LEPREL1
Uniprot:	Q8IVL5
BiowMW:	Refer to Figures
Buffer:	Liquid in 0.42% Potassium phosphate, 0.87% Sodium chloride, pH 7.3, 30% glycerol, and 0.01% Thimerosal.
Storage:	Shipped at 4°C. Upon delivery aliquot and store at -20°C for one year. Avoid freeze/thaw cycles.
Note:	For research use only, not for use in diagnostic procedure.

Data:



Western blot analysis of LEPREL1 expression in HeLa (A) whole cell lysates. (Predicted band size: 60; 80 kD; Observed band size: 85 kD)