

## 53BP1 (Phospho-S6) Antibody

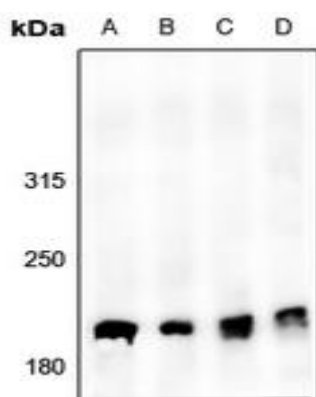
### Basic information:

<b>Catalog No.:</b>	UPA08878	<b>Source:</b>	Rabbit
<b>Size:</b>	50ul/100ul	<b>Clonality:</b>	Polyclonal
<b>Concentration:</b>	1mg/ml	<b>Isotype:</b>	IgG
<b>Purification:</b>	The antibody was purified by immunogen affinity chromatography.		

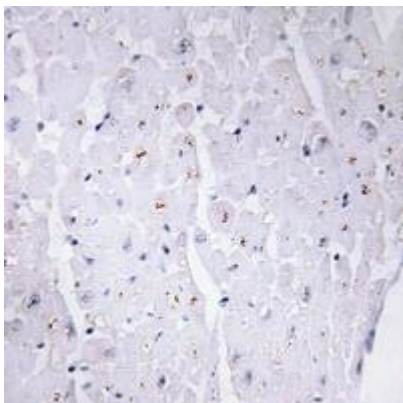
### Useful Information:

<b>Applications:</b>	WB (1:500 - 1:1000), IHC (1:50 - 1:200)
<b>Reactivity:</b>	Human, Mouse, Rat
<b>Specificity:</b>	Recognizes endogenous levels of 53BP1 protein only when phosphorylated at S6.
<b>Immunogen:</b>	KLH-conjugated synthetic phosphopeptide corresponding to residues surrounding S6 of human 53BP1 protein. The exact sequence is proprietary.
<b>Description:</b>	Rabbit polyclonal antibody to 53BP1 (Phospho-S6)
<b>Uniprot:</b>	Q12888
<b>BiowMW:</b>	Refer to Figures
<b>Buffer:</b>	Liquid in 0.42% Potassium phosphate, 0.87% Sodium chloride, pH 7.3, 30% glycerol, and 0.01% Thimerosal.
<b>Storage:</b>	Shipped at 4°C. Upon delivery aliquot and store at -20°C for one year. Avoid freeze/thaw cycles.
<b>Note:</b>	For research use only, not for use in diagnostic procedure.

### Data:



Western blot analysis of 53BP1 (Phospho-S6) expression in HeLa (A), U87MG (B), 3T3L1 (C), H9C2 (D) whole cell lysates. (Predicted band size: 213 kDa; Observed band size: 220 kDa)



Immunohistochemical analysis of 53BP1 (Phospho-S6) staining in human heart formalin fixed paraffin embedded tissue section. The section was pre-treated using heat mediated antigen retrieval with sodium citrate buffer (pH 6.0). The section was then incubated with the antibody at room temperature and detected using an HRP conjugated compact polymer system. DAB was used as the chromogen. The section was then counterstained with haematoxylin and mounted with DPX.