

Caveolin 2 (Phospho-Y27) Antibody

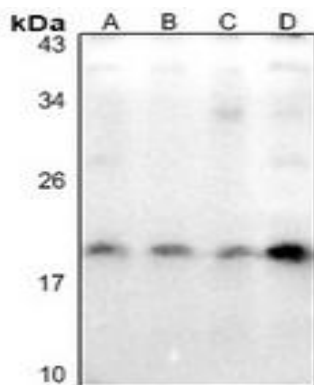
Basic information:

Catalog No.:	UPA09065	Source:	Rabbit
Size:	50ul/100ul	Clonality:	Polyclonal
Concentration:	1mg/ml	Isotype:	IgG
Purification:	The antibody was purified by immunogen affinity chromatography.		

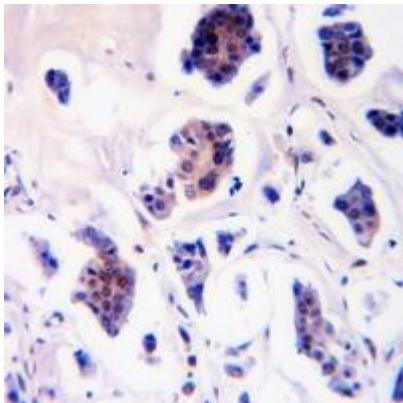
Useful Information:

Applications:	WB (1:500 - 1:1000), IHC (1:50 - 1:100)
Reactivity:	Human, Mouse, Rat
Specificity:	Recognizes endogenous levels of Caveolin 2 protein only when phosphorylated at Y27.
Immunogen:	KLH-conjugated synthetic phosphopeptide corresponding to residues surrounding Y27 of human Caveolin 2 protein. The exact sequence is proprietary.
Description:	Rabbit polyclonal antibody to Caveolin 2 (Phospho-Y27)
Uniprot:	P51636
BiowMW:	Refer to Figures
Buffer:	Liquid in 0.42% Potassium phosphate, 0.87% Sodium chloride, pH 7.3, 30% glycerol, and 0.01% Thimerosal.
Storage:	Shipped at 4°C. Upon delivery aliquot and store at -20°C for one year. Avoid freeze/thaw cycles.
Note:	For research use only, not for use in diagnostic procedure.

Data:



Western blot analysis of Caveolin 2 (Phospho-Y27) expression in A2780 (A), H1792 (B), PC12 (C), AML12 (D) whole cell lysates. (Predicted band size: 18 kD; Observed band size: 18 kD)



Immunohistochemical analysis of Caveolin 2 (Phospho-Y27) staining in human breast cancer formalin fixed paraffin embedded tissue section. The section was pre-treated using heat mediated antigen retrieval with sodium citrate buffer (pH 6.0). The section was then incubated with the antibody at room temperature and detected using an HRP conjugated compact polymer system. DAB was used as the chromogen. The section was then counterstained with haematoxylin and mounted with DPX.