

## TPD52L2 Antibody

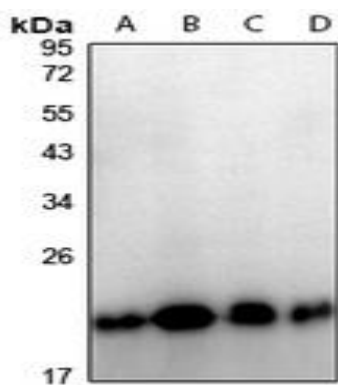
### Basic information:

<b>Catalog No.:</b>	UPA09121	<b>Source:</b>	Rabbit
<b>Size:</b>	50ul/100ul	<b>Clonality:</b>	Polyclonal
<b>Concentration:</b>	1mg/ml	<b>Isotype:</b>	IgG
<b>Purification:</b>	The antibody was purified by immunogen affinity chromatography.		

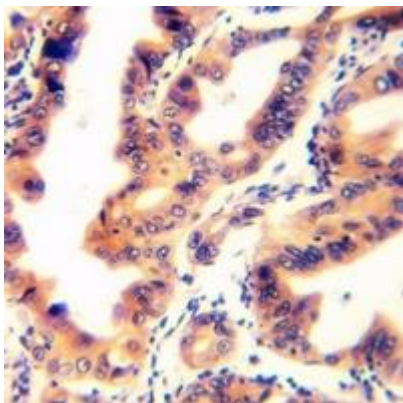
### Useful Information:

<b>Applications:</b>	WB (1:500 - 1:1000), IHC (1:50 - 1:100)
<b>Reactivity:</b>	Human, Mouse, Rat, Monkey
<b>Specificity:</b>	Recognizes endogenous levels of TPD52L2 protein.
<b>Immunogen:</b>	KLH-conjugated synthetic peptide encompassing a sequence within the C-term region of human TPD52L2. The exact sequence is proprietary.
<b>Description:</b>	Rabbit polyclonal antibody to TPD52L2
<b>Uniprot:</b>	O43399
<b>BiowMW:</b>	Refer to Figures
<b>Buffer:</b>	Liquid in 0.42% Potassium phosphate, 0.87% Sodium chloride, pH 7.3, 30% glycerol, and 0.01% Thimerosal.
<b>Storage:</b>	Shipped at 4°C. Upon delivery aliquot and store at -20°C for one year. Avoid freeze/thaw cycles.
<b>Note:</b>	For research use only, not for use in diagnostic procedure.

### Data:



Western blot analysis of TPD52L2 expression in Jurkat (A), HEK293T (B), Raw264.7 (C), PC12 (D) whole cell lysates. (Predicted band size: 22 kD; Observed band size: 22 kD)



Immunohistochemical analysis of TPD52L2 staining in human colorectal cancer formalin fixed paraffin embedded tissue section. The section was pre-treated using heat mediated antigen retrieval with sodium citrate buffer (pH 6.0). The section was then incubated with the antibody at room temperature and detected using an HRP conjugated compact polymer system. DAB was used as the chromogen. The section was then counterstained with haematoxylin and mounted with DPX.