

SUV420H2 Antibody

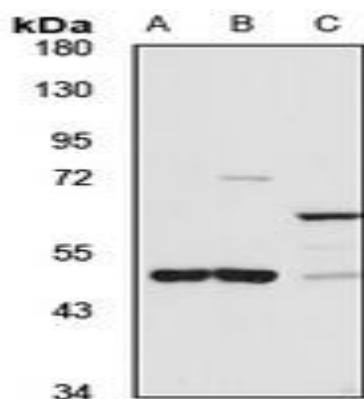
Basic information:

Catalog No.:	UPA11638	Source:	Rabbit
Size:	50ul/100ul	Clonality:	Polyclonal
Concentration:	1mg/ml	Isotype:	IgG
Purification:	The antibody was purified by immunogen affinity chromatography.		

Useful Information:

Applications:	WB (1:500 - 1:2000)
Reactivity:	Human, Mouse
Specificity:	Recognizes endogenous levels of SUV420H2 protein
Immunogen:	KLH-conjugated synthetic peptide of human SUV420H2. The exact sequence is proprietary.
Description:	Rabbit polyclonal antibody to SUV420H2
Uniprot:	Q86Y97
BiowMW:	Refer to Figures
Buffer:	Liquid in 0.42% Potassium phosphate, 0.87% Sodium chloride, pH 7.3, 30% glycerol, and 0.01% Thimerosal.
Storage:	Shipped at 4°C. Upon delivery aliquot and store at -20°C for one year. Avoid freeze/thaw cycles.
Note:	For research use only, not for use in diagnostic procedure.

Data:



Western blot analysis of SUV420H2 expression in HeLa (A), K562 (B), mouse brain (C) whole cell lysates. (Predicted band size: 10; 52 kD; Observed band size: 52 kD)